

University Plaza
Atlanta, GA 30303-3083
Phone: 404/651-3025
Fax: 404/651-3567



NEWS RELEASE

Nov. 14, 2003

Contact:

Brad Dixon
404/651-3575
braddixon@gsu.edu

Poll: Georgia residents divided over direction of state, nation

ATLANTA — Georgia's Republicans and Democrats have developed a striking discrepancy in their opinions on the state of their state since last year, indicating that January's legislative session could be even more antagonistic than usual, Georgia State University researchers say.

In its quarterly telephone survey of randomly selected Georgia residents known as the Georgia State Poll, the Andrew Young School of Policy Studies found that 60 percent of Republicans think the state is on the right course, while only 36 percent of Democrats agree. Sixty-seven percent of the state's Republicans approve of national affairs, compared to 21 percent of Democrats.

The results are surprising because as recently as last year members of Georgia's two parties were closely matched in agreeing that the state was on the right track.

"A polarization has occurred among groups within the state over the last year," said researcher Charlotte Steeh, associate professor of public administration and urban studies in the Andrew Young School. "The sudden gap between Democrats and Republicans is particularly striking. The partisan division indicates that the upcoming session of the state legislature may be contentious and less productive as the political parties take opposing stands on public issues."

As a whole, 48 percent of Georgians said they feel that “generally speaking, things in Georgia are heading in the right direction,” while 33 percent think Georgia is “on the wrong track.” The state’s residents are almost equally split on national affairs, with 42 percent approving and 44 percent disapproving.

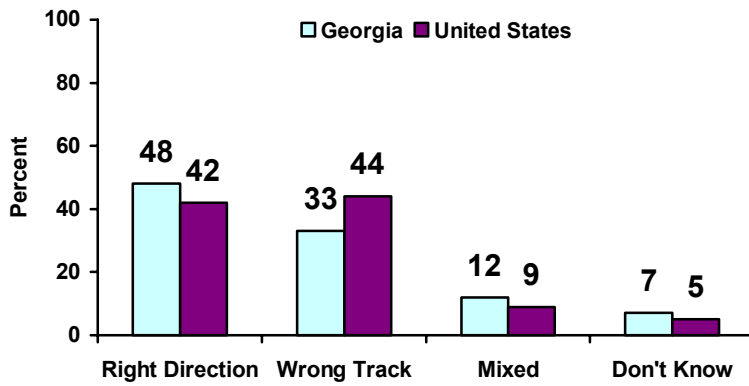
Asked periodically in the Georgia State Poll since 1993, the question about Georgia’s affairs is a reliable barometer of public opinion, with responses fluctuating in ways that typically reflect actual conditions in the state, Steeh says.

The percentage of residents who approve of the state’s course has ranged from 42 percent during 1993, when controversy raged over removing the Confederate emblem from the state flag, to 62 percent in 1999, when the economy was thriving. Positive assessment of state affairs has hovered at 48 to 50 percent this year.

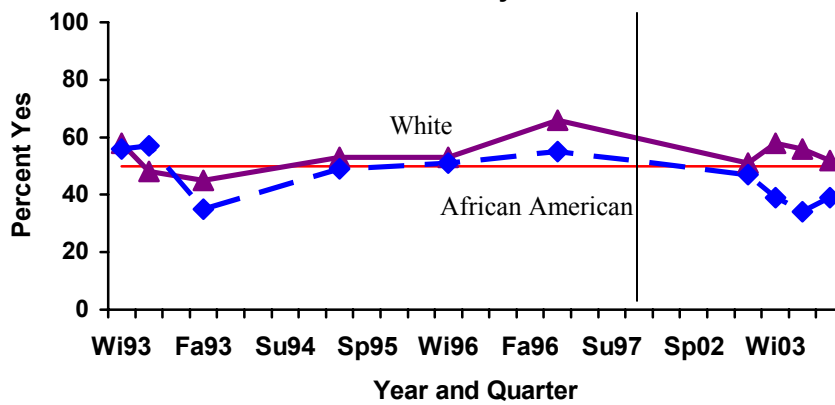
The poll also revealed that 52 percent of whites think Georgia is on track, while only 39 percent of African-Americans feel the same. About half of Georgia’s Caucasian residents approve of national affairs, compared to a quarter of African-Americans.

The Georgia State Poll is a quarterly telephone survey of Georgians age 18 and over. For the latest poll, 794 residents were randomly selected and interviewed from Aug. 4 through Oct. 7. The poll’s error rate is plus or minus 3.5 percentage points.

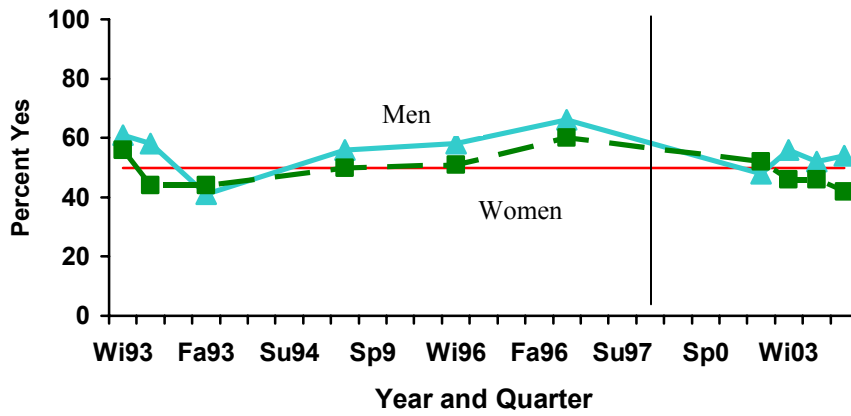
Direction Things Are Taking, United States and Georgia, Summer-Fall, 2003



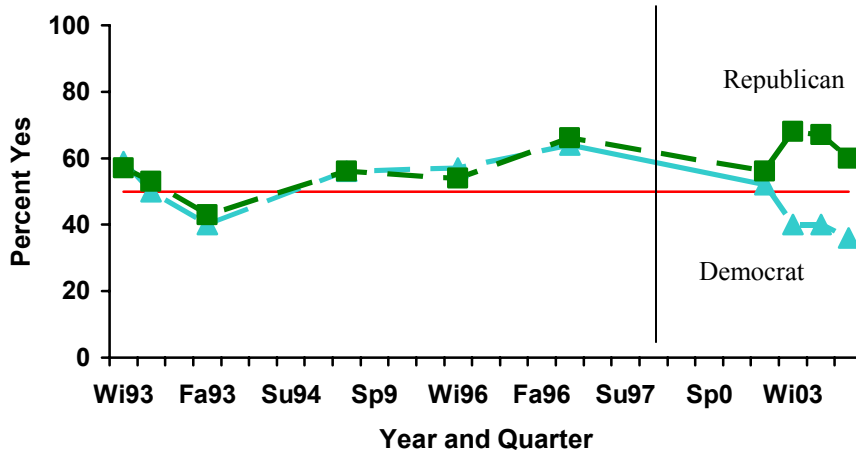
Things in Georgia Are Going in Right Direction, 1993 - 2003 by Race



Things in Georgia Are Going in Right Direction,
1993 - 2003 by Gender



Things in Georgia Are Going in Right Direction,
1993 - 2003 by Political Party



TABLES

Generally speaking, would you say things in Georgia are heading in the right direction, or are they off on the wrong track? Summer-Fall 2003

| Variable Name | Categories | Right | Wrong | Mixed | DK/NA |
|------------------------|---------------------|--------------|--------------|--------------|--------------|
| Total | | 47.9% | 32.7% | 12.5% | 6.9% |
| Gender | | | | | |
| | Male | 54.4 | 30.8 | 8.8 | 5.9 |
| | Female | 42.4 | 33.9 | 16.0 | 7.9 |
| Age | | | | | |
| | 18-24 | 59.4 | 26.5 | 12.9 | 1.3 |
| | 25-34 | 42.9 | 32.7 | 16.1 | 8.3 |
| | 35-44 | 52.4 | 34.1 | 7.3 | 6.1 |
| | 45-54 | 40.5 | 40.5 | 13.2 | 5.8 |
| | 55-64 | 47.6 | 30.2 | 11.1 | 11.1 |
| | 65 + | 42.1 | 29.5 | 14.7 | 13.7 |
| Education | | | | | |
| | High School or Less | 45.3 | 31.6 | 15.3 | 7.8 |
| | Some College | 52.5 | 31.8 | 11.7 | 3.9 |
| | College Degree + | 48.6 | 33.2 | 10.4 | 7.8 |
| Race | | | | | |
| | White | 52.2 | 28.8 | 12.7 | 6.2 |
| | African-American | 38.8 | 41.8 | 14.9 | 4.5 |
| | Other | 47.6 | 30.2 | 6.3 | 15.9 |
| Income | | | | | |
| | Less than \$25,000 | 42.0 | 30.9 | 17.3 | 9.9 |
| | \$25,000 - \$49,999 | 52.9 | 32.9 | 7.9 | 6.3 |
| | \$50,000 + | 50.7 | 33.3 | 12.2 | 3.8 |
| Political Party | | | | | |
| | Democrat | 36.0 | 41.7 | 16.7 | 5.7 |
| | Republican | 59.8 | 21.6 | 12.0 | 6.6 |
| | Independent | 54.3 | 29.7 | 8.7 | 7.3 |
| Metro Region | | | | | |
| | Non-Metro | 51.5 | 27.7 | 13.0 | 7.9 |
| | Five County Metro | 41.5 | 41.9 | 11.9 | 4.7 |

Generally speaking, would you say things in United States are heading in the right direction, or are they off on the wrong track? Summer-Fall 2003

| Variable Name | Categories | Right | Wrong | Mixed | DK/NA |
|------------------------|---------------------|--------------|--------------|--------------|--------------|
| Total | | 41.9% | 43.9% | 9.5% | 4.7% |
| Gender | | | | | |
| | Male | 46.8 | 43.8 | 7.4 | 1.9 |
| | Female | 37.7 | 44.0 | 11.5 | 6.9 |
| Age | | | | | |
| | 18-24 | 46.1 | 42.8 | 7.9 | 3.3 |
| | 25-34 | 39.2 | 48.4 | 8.5 | 3.9 |
| | 35-44 | 49.4 | 41.3 | 5.6 | 3.8 |
| | 45-54 | 39.1 | 48.7 | 10.4 | 1.7 |
| | 55-64 | 43.5 | 38.7 | 12.9 | 4.8 |
| | 65 + | 34.4 | 41.9 | 14.0 | 9.7 |
| Education | | | | | |
| | High School or Less | 43.9 | 42.9 | 8.3 | 4.8 |
| | Some College | 37.4 | 44.4 | 14.0 | 4.1 |
| | College Degree + | 43.1 | 44.9 | 8.2 | 3.7 |
| Race | | | | | |
| | White | 49.5 | 37.2 | 3.5 | 3.1 |
| | African-American | 24.2 | 62.6 | 8.1 | 5.0 |
| | Other | 48.2 | 35.7 | 7.1 | 9.0 |
| Income | | | | | |
| | Less than \$25,000 | 25.5 | 47.1 | 18.3 | 9.1 |
| | \$25,000 - \$49,999 | 44.3 | 45.2 | 6.6 | 4.0 |
| | \$50,000 + | 50.5 | 41.1 | 7.0 | 1.4 |
| Political Party | | | | | |
| | Democrat | 20.5 | 64.2 | 10.6 | 4.7 |
| | Republican | 67.1 | 25.1 | 6.9 | 0.8 |
| | Independent | 45.0 | 39.3 | 8.5 | 7.1 |
| Metro Region | | | | | |
| | Non-Metro | 42.7 | 41.1 | 11.4 | 4.9 |
| | Five County Metro | 40.5 | 48.9 | 6.2 | 4.4 |

**Percent of Georgia Residents Saying State Is Going in the Right Direction, 1993 – 2003,
Georgia State Poll**

| Quarter | Overall | Male | Female | White | African American | Five County Metro Area | Remainder of Counties | Democrat | Republican |
|----------------|---------|------|--------|-------|---------------------|------------------------------|-----------------------------|----------|------------|
| Winter 93 | 57 | 61 | 56 | 58 | 56 | 59 | 57 | 59 | 57 |
| Spring 93 | 50 | 58 | 44 | 48 | 57 | 53 | 49 | 50 | 53 |
| Fall 93 | 42 | 41 | 44 | 45 | 35 | 50 | 38 | 40 | 43 |
| Winter 95 | 53 | 56 | 50 | 53 | 49 | 56 | 51 | 56 | 56 |
| Winter 96 | 54 | 58 | 51 | 53 | 51 | 52 | 54 | 57 | 54 |
| Winter 97 | 62 | 66 | 60 | 66 | 55 | 68 | 59 | 64 | 66 |
| Fall 02 | 50 | 48 | 52 | 51 | 47 | 52 | 49 | 52 | 56 |
| Winter 03 | 52 | 56 | 46 | 58 | 39 | 52 | 52 | 40 | 68 |
| Spring 03 | 49 | 52 | 46 | 56 | 34 | 50 | 48 | 40 | 67 |
| Summer-Fall 03 | 48 | 54 | 42 | 52 | 39 | 42 | 52 | 36 | 60 |

Methodology Summary
Summer-Fall 2003
GEORGIA STATE POLL

The Summer-Fall 2003 GEORGIA STATE POLL, a telephone survey of adults 18 and over who live in households in Georgia, was conducted by the Domestic Programs Office at Georgia State University. For the summer-fall POLL, 794 residents were randomly selected and interviewed from August 4 – October 7, 2003 on a variety of public policy issues. All adults living in Georgia with a working telephone (including new and unlisted numbers but excluding cellular telephone numbers) were eligible for the POLL.

Interviewing was conducted on Monday - Friday from 10:00 a.m. to 9:15 p.m., on Saturday from 11:00 a.m. to 7:00 p.m. and on Sunday from 12:00 p.m. to 7:00 p.m. The actual results collected were weighted using the 2000 U.S. Census data for the state of Georgia.

The results of the POLL are likely to contain some error. Ninety-five percent of the time, error due to the random selection process will be no more than 3.5 percentage points plus or minus the reported percentage for 794 respondents. On average, 8.7 calls were made to each working telephone number in the sample. Other types of error occur when individuals refuse to participate in the interview or when selected respondents cannot be contacted. Every feasible effort has been made to obtain a response and reduce the error, but the reader should be aware that some error is inherent in all research.