

## From the Dean



The strategic planning process for the AYSPS has officially begun! Some of you have already received emails asking you to participate in a focus group meeting. Others will soon get requests for interviews. I hope you will participate if you possibly can; it is really important to gather information and opinions to inform the later stages of the planning process.

Here is an overview/timeline of what we are doing and what will be coming over the next three months:

The steering committee was formed late in fall semester. It includes:

- Paula Stephan
- Nancy Kropf
- Chris Parker
- Glen Ross
- Laura Wheeler
- Tim Brezina
- Cynthia Searcy

Note that management committee members and department chairs were asked to solicit interested individuals for this committee. I appreciate those of you who stepped up! I hope that you will talk with the committee members about your ideas and concerns regarding the strategic plan.

The current process of gathering information is called the 'environmental scan.' This will end by February 28<sup>th</sup>. We have a school-wide luncheon scheduled on Tuesday, March 5 from noon to 1:30 pm to present the results of the environmental scan. We are hoping to have a speaker talk to us about the future of policy schools at that event and collect some initial thoughts from you about the future of the school.

Following the luncheon, phase II of the planning process begins. We hope you will make an effort to attend the luncheon to learn more about next steps.

## Grants



**Josh Hinkle** (pictured), assistant professor (Criminal Justice & Criminology) and **Volkin Topalli**, associate professor (Criminal Justice & Criminology) are co-PIs on a grant from the National Science Foundation along with colleagues Elizabeth Griffiths (Rutgers University) and Kay Levine (Emory University). The title of the grant is, "Race, Place and Discretion in the Handling of Drug-Free Zone Charges." The grant (\$390,000) will fund a 3-year, mixed methods, interdisciplinary study of "Drug-Free Zones" in Atlanta.



**James C. Cox** (pictured), professor (Economics), director (Experimental Economics Center), and the Noah Langdale Jr Chair in Economics/Georgia Research Alliance Eminent Scholar, **Vjollca Sadiraj**, assistant professor (Economics), and **Kurt E. Schnier**, associate professor (Economics), along with John F. Sweeney, Professor of Surgery at (Emory University School of Medicine) have been awarded funding for a VentureLab Phase IA and IB Proposal from the Georgia Research Alliance. The VentureLab award is to investigate the commercial viability of a surgical discharge model developed jointly by the Experimental Economics Center and the Emory Department of Surgery, with NIH Funding, aimed at increasing a physician's effectiveness in identifying the optimal time to discharge a patient. This healthcare information technology model has the important potential to reduce the risk of re-admission within 30 days following hospital discharge after surgery.

## Publications



**Bruce Kaufman**, professor (Economics), "Sidney and Beatrice Webbs' Institutional Theory of Labor Markets and Wage Determination," *Industrial Relations*, forthcoming.



**Holly Avey**, associate project director (Georgia Health Policy Center), "Using a Health in All Policies Approach to Address Social Determinants of Sexually Transmitted Disease Inequities in the Context of Community Change and Redevelopment," *Public Health Reports: Volume 128, Number 3 (May/June 2013)*.



**Jan Ligon**, associate professor (Social Work), co-authored with Thyer (Florida State University) and A Cobb (Florida State University), "Academic affiliations of social work journal article authors, 2004 – 2008," *Journal of Social Work Education* (48), 613-622 (2012).

## Presentations



**Carolyn Bourdeaux**, associate professor (Public Management and Policy), presented "A Briefing on Georgia's Budget and TABOR" to the Georgia Chapter of the AARP, Atlanta, GA, November 28, 2012.

**Carolyn Bourdeaux** presented "A Briefing on Georgia's Budget" to the Georgia Partnership for Excellence in Education, Atlanta, GA, November 14, 2012.



**Barbara D. Warner**, professor (Criminal Justice and Criminology), Kristin Swartz (University of Louisville) and **Shila Hawk-Tourtelot**, Ph.D. student (Criminal Justice and Criminology) presented "Racial Homophily in Social Networks and Informal Social Control" at the American Society of Criminology meetings, Chicago, IL, November 2012.

**Gerry Neumark**, part-time instructor (Public Management and Policy) presented "The Atlanta BeltLine a Culture Clash: the Case of Tenth and Monroe" to the Georgia Political Science Association, November 9, 2012.



**Jimmy Dills**, research associate II (Georgia Health Policy Center), P. Dean Surbey (Emory University) and Bourke Reeves (Southface Commercial Green Building Services), discussed the recent certification of the Claudia Nance Rollins building as LEED silver and the public health implications of sustainable architecture during the "Lunch & Learn Panel Discussion: Sustainable Architecture" at Emory University on November 14, 2012.



**Julie Hotchkiss** (pictured), adjunct professor (Economics), and research economist and policy advisor (Federal Reserve Bank of Atlanta), presented "The Wage Impact of Undocumented Workers," co-authored with Myriam Quispe-Agnoli (Federal Reserve Bank of Atlanta) and **Fernando Rios-Avila**, Ph.D. student (Economics), at the Southern Economics Association Meetings, New Orleans, LA, November 16-18, 2012.



Julie Hotchkiss, presented "Nonparticipation During the great Recession: Investments in Human Capital?" co-authored with M. Melinda Pitts (Federal Reserve Bank of Atlanta) and **Fernando Rios-Avila** (pictured), at the Southern Economics Association Meetings, New Orleans, LA, November 16-18, 2012.

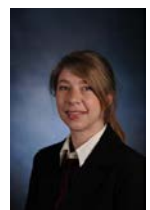
## Media Hits



**Paula Stephan**, professor (Economics), appeared on *BioCentury This Week* in various markets and online on December 9, 2012. <http://www.biocenturytv.com/player/2023772174001>.

**Paula Stephan** was quoted in on the on-line publication *Science Careers*, December 14, 2012, regarding new training guidelines proposed by NIH: [http://sciencecareers.sciencemag.org/career\\_magazine/previous\\_issues/articles/2012\\_12\\_14/caredit.a1200136](http://sciencecareers.sciencemag.org/career_magazine/previous_issues/articles/2012_12_14/caredit.a1200136).

**Stephan** says the U.S. places almost all assets at the national level in safe research. "We need to think about our portfolio for what we fund, and that means we need to choose some risky things as we go along." <http://www.biocenturytv.com/player/2023772174001/2023559632001>



**Carlianne Patrick**, assistant professor (Economics), was quoted in *The Oregonian's* Sunday Business section lead story on economic development incentives competition on November 3, 2012. [http://www.oregonlive.com/silicon-forest/index.ssf/2012/11/salesforce\\_picked\\_portland\\_-.html](http://www.oregonlive.com/silicon-forest/index.ssf/2012/11/salesforce_picked_portland_-.html)

## Outreach



**Bill Waugh**, professor (Public Management and Policy) was appointed to the editorial board of *Administration & Society*.



**Sally Wallace**, chair and professor (Economics) and director (Fiscal Research Center), served as a discussant for the Federal Reserve Bank of Atlanta and Georgia State University conference, "the Southeastern International/Development Workshop," Atlanta, GA, December 7, 2012.

The **Georgia International Law Enforcement Exchange (GILEE)** co-sponsored the fourth annual Law Enforcement and Business Continuity Summit in Atlanta on September 27, 2012. About 200 participants including corporate security, corporate counsels, law enforcement, homeland security, and public safety officials heard presentations on cyber-crime and cyber terrorism issues and participated in a simulated live attack scenario in three different breakout sessions facilitated by six national experts.

**GILEE** hosted its 16th delegation of police leaders from Israel at its annual, intensive two-week anti-terrorism peer training program in Georgia. The 15-member delegation participated in site visits and professional public safety briefings at more than a dozen state and local police departments and public safety agencies, visited Lockheed Martin to view the C-130J and were welcomed by several mayors and other elected officials. Several media posted the visit, including the story, "Officer Offering Advice," on WSB Channel 2 Action News, October 25, 2012.

## New Staff Joins Georgia Health Policy Center



**Mohammad Khalaf** recently joined the Georgia Health Policy Center after concluding his work abroad where he served at the International Rescue Committee as a program manager for the Child Education and Wellbeing Project in the Palestinian Territories. He brings experience in the design, planning, and evaluation of health reform programs and health services research, as well as liaising between stakeholders from different sectors and collaborating with various donors. Mohammad received his M.P.H. from the University of North Carolina at Greensboro and a B.S. in Biology from Guilford College in North Carolina. His work will focus on chronic diseases prevention, cancer and health equity strategic planning, community health needs assessment, and health workforce analysis.

## Student and Alumni



**Brandon Tisdale**, (B.S. in Criminal Justice '12), recently completed the Special Agent Candidate Course at the Georgia Public Safety Training Center in Forsyth, Ga. He was one of forty-five men and women who received diplomas and GBI Special Agent Credentials at graduation ceremonies at the Training Center. Governor Nathan Deal was the keynote speaker at the graduation. Tisdale has been assigned to the GBI's Regional Office in Conyers and will be detached to the Social Security Fraud Unit.

The *Dean's E-News* is a feature published by the AYSPS Dean's Office.  
For publication in the next issue, please submit your news items by Thursday at 5:15 p.m. to  
**Gayon McFarquhar-Johnson** at [gayon@gsu.edu](mailto:gayon@gsu.edu)