

## Grants, Awards, & Honors



The **Georgia Health Policy Center** received a contract for \$73,014 from the Georgia Department of Public Health to develop a statewide strategic and sustainability plan for asthma control in Georgia. **Chris Parker** (pictured), associate project director, is the principle investigator. **Beverly Tyler**, associate project director; **Naima Wong**, senior research associate; **Stacey Willocks**, senior research associate; **John Butts**, research associate II; and **Tamanna Patel**, research associate II, will participate in the project, which will run through May 2012.



**Ted Poister** (pictured), professor (Public Management and Policy), alumna **Lauren Edwards**, (Ph.D. in Public Policy '11 and now at Sam Houston University), and **Obed Pasha**, Ph.D. student (Public Management and Policy) received the Phanstiel Award for their paper, "The Impact of Strategy Content and Development on Performance in Public Transit Agencies" presented at the Public Management Research Conference in Syracuse, New York, June 2011. The \$2,000 prize was presented by the Maxwell School at Syracuse University for the best paper on public management or leadership, with an emphasis on strategic management, presented at the PMRC.

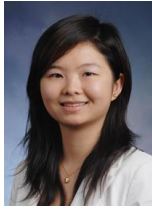


**Adriel Jones**, event planner (Professional Excellence Training Program, School of Social Work), was recently honored with the Shining Star Award from the Georgia Chapter of Meeting Professionals International (GaMPI). For the past six years, Jones has logged over 240 hours of volunteer time providing support and technical assistance to groups of candidates preparing for their MPI Certification exams. Jones was honored at the monthly meeting in Atlanta on January 17, 2012.

## Publications



**Bill Kahnweiler**, associate professor (Public Management and Policy), "Non-Profit Organizations: A Primer for OD Researchers and Practitioners," *Organization Development Journal*, Winter 2011, Volume 29, Number 4, pages 81 -89.



**Cathy Yang Liu** (pictured), assistant professor (Public Management and Policy), with **Ric Kolenda**, Ph.D. student (Public Management and Policy), "Are Central Cities More Creative? The Intrametropolitan Geography of Creative Industries," *Journal of Urban Affairs*, forthcoming.



**Robert Moore**, associate dean (AYSPS) and associate professor (Economics), "Assessing the Welfare Impact of Tax Reform: A Case Study of the 2001 U.S. Tax Cut," jointly with **Julie Hotchkiss**, adjunct professor (Economics) and **Fernando Rios-Avila**, Ph.D. student (Economics), the *Review of Income and Wealth*, forthcoming.



**Dean Dabney** (pictured), associate professor (Criminal Justice and Criminology), Heith Copes (University of Alabama, Birmingham), Richard Tewksbury (University of Louisville), and **Shila Hawk-Tourtelot**, Ph.D. student (Criminal Justice & Criminology), "A Qualitative Assessment of Stress Perceptions Among Members of a Homicide Unit," *Justice Quarterly*, forthcoming.

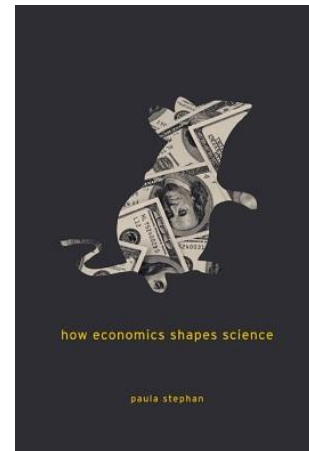


**Andrew Feltenstein**, professor (Economics), "Tax Reform, the Informal Economy, and Bank Financing of Capital Formation," with Maral Shamloo, (International Monetary Fund), *International Tax and Public Finance*, forthcoming.



Paula Stephan, professor (Economics), has just published How Science Shapes Economics, Harvard University Press.

<http://www.hup.harvard.edu/catalog.php?isbn=9780674049710>





**Bruce Kaufman**, professor (Economics), “Keeping Employee Commitment in the Air in Turbulent Times: Employee Involvement at Delta Airlines,” *Industrial Relations*, forthcoming.

**Bruce Kaufman**, “Some Coasian Problems with Posnerian Law & Economics,” *Journal of Economic Issues*, forthcoming.

## Presentations

**Holly Avey**, associate project director; **Jane Branscomb** (pictured), research associate II; **Beth Fuller**, research associate II; and **Naima Wong**, senior research associate (Georgia Health Policy Center) presented “Fort McPherson: Opportunities to Improve Health in the Context of Change” at the GSU visualization wall on November 18, 2011. Visit the GHPC Flickr album at [www.gsu.edu/ghpc](http://www.gsu.edu/ghpc) for more photos from the event.



**James C. Cox**, professor (Economics), director (Experimental Economics Center), and the Noah Langdale Jr. Chair in Economics/Georgia Research Alliance Eminent Scholar, presented the Presidential Address titled “Bosses, Kings and Dictators: Effects of Asymmetric Power in Private and Common Property Environments” at the 78<sup>th</sup> Annual Conference of the Southern Economic Association on November 20, 2011. As SEA president, Cox chaired the meeting of the SEA Board of Advisers and the SEA Business Meeting on November 19 and 20, 2011.



**Paul Ferraro**, professor (Economics), presented “Protecting Ecosystem Services and Alleviating Poverty: Key Challenges” at Stanford University, Palo Alto, CA, December 7, 2011.

## Activities and Outreach



**Bill Waugh**, professor (Public Management and Policy), participated in a discussion of higher education and development at Dalat University, Dalat, Vietnam, December 28, 2011.

## Media Hits

The **Georgia Health Policy Center** (GHPC) was referenced in the WCTV article "Georgia Awarded Nearly \$900,000 for Breast Cancer Research" on November 18, 2011. The GHPC is a partner in the development of the education, surveillance and policy goals for the CDC cooperative agreement. Read the full article at:

[http://www.wctv.tv/home/headlines/Georgia\\_Awarded\\_Nearly\\_900000\\_for\\_Breast\\_Cancer\\_Research\\_134148453.html](http://www.wctv.tv/home/headlines/Georgia_Awarded_Nearly_900000_for_Breast_Cancer_Research_134148453.html).



**Michael J. Bell**, professor of practice (Public Management and Policy), was quoted in an *Atlanta Journal & Constitution* article "Fulton not quite as bloated as detractors claim" regarding the level of funding for the South Special Services District within Fulton County on January 16, 2012. Article can be found at: <http://www.ajc.com/news/atlanta/fulton-not-quite-as-1300379.html>.

**Michael J. Bell** was quoted in the *Atlanta Journal & Constitution* article "South Fulton residents face tax rate hike but are told bills won't rise," on December 30, 2011, relative to possible property tax increases in South Fulton County to fund needed services. Article can be found at: <http://www.ajc.com/news/atlanta/south-fulton-residents-face-1280479.html>.

**Michael J. Bell** was quoted in the *Atlanta Journal & Constitution* article "Rate hike rollback raises concerns," on January 7, 2012, of the Metro Section on the City of East Point's general fund difficulties stemming from reduced revenues being transferred from utilities. Article can be found at: <http://www.ajc.com/news/atlanta/rate-hike-rollback-raises-1292939.html>.

## Research Center Publications

The **Fiscal Research Center** has published *Georgia's Taxes 18<sup>th</sup> Edition*, an annual publication designed to give a quick overview of state and local taxes in Georgia and comparisons with other states. Publication can be found at: <http://aysps.gsu.edu/frc/7460.html>.

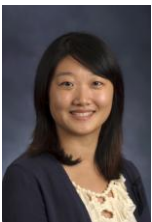
## Student & Alumni News



**Jasmine McGinnis**, Ph.D. student (Public Management and Policy), recently accepted a position as an assistant professor at George Washington University, beginning fall 2012.

DHS Commissioner Clyde L. Reese, III, on December 6 announced that AYSPS alumnus **Ron Scroggy**, (B.S.W. '81) will serve as the department's acting director for the Division of Family & Children Services (DFCS). He will serve in this capacity until the Commissioner's Office completes a search for a new DFCS director.

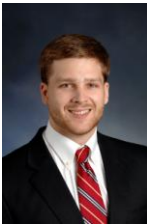
Scroggy has over 30 years of experience leading and managing teams and operations of residential treatment facilities. He joined DFCS as the chief of staff in October 2010 and was promoted to the position of DFCS deputy director July 2011. He dedicated 20 years of his career to Inner Harbour Hospitals, where he most recently held the positions of chief executive officer and president.



**Danyang Li**, Ph.D. student (Economics), was awarded the Georgia State University dissertation grant for her dissertation titled "Testing the Organ Donation Registration System in the Lab."

**Welcome!**

**Carolyn Bourdeaux**, associate professor (Public Management and Policy) and associate director (Fiscal Research Center), and her husband Jeff Skodnik welcomed son Robert Nathan Skodnik on January 13, 2012. Nate weighed in at 7 lbs. 14 oz. and 21 inches long. Both mother and son are doing well.



**Mark Curtis**, Ph.D. student (Economics), and his wife Lindley welcomed their daughter on January 24. Claire Annette Curtis was born weighing 7 lbs. 7 oz. and is 19.75 inches long. Both mother and daughter are doing well.



The *Dean's E-News* is a weekly feature published by the AYSPS Dean's Office. For publication in the next issue, please submit your news items by Thursday at 5:15 p.m. to **Gayon McFarquhar-Johnson** at [gayon@gsu.edu](mailto:gayon@gsu.edu)



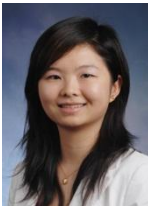
## Publications



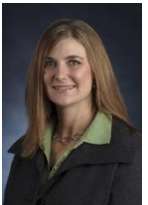
**Neven Valev** (pictured), "Experiences of a Banking Crisis and Expectations of a New Crisis," with Shannon Mudd (Haverford College) and Konstantin Pashev (European Commission in Brussels), *The B.E. Journal of Macroeconomics*, forthcoming.



**Neven Valev**, associate professor (Economics), "Banks, Stock Markets, and the Sources of Economics Growth," with **Felix Rioja**, (pictured) associate professor (Economics), *Journal of Economics and Finance*, forthcoming.



**Cathy Yang Liu**, assistant professor (Public Management and Policy), "The Causes and Dynamics of Minority Entrepreneurial Entry", *Journal of Developmental Entrepreneurship*, forthcoming.



C. Rine (Plymouth State University) and **Robin Hartinger-Saunders** (pictured), assistant professor (School of Social Work), "A review and application of existing theories in neighborhood research: Toward a model for social work practice," *Journal of Human Behavior in the Social Environment*, 22, 39-53.



Shadd Maruna (Queens University Belfast), **Dean Dabney**, (pictured) associate professor (Criminal Justice and Criminology), and **Volkan Topalli**, associate professor (Criminal Justice & Criminology), "Putting a price on prisoner release: The history of bail and the future of parole," *Punishment & Society*, forthcoming.

## Presentations

**Elizabeth Fuller**, research associate II (Georgia Health Policy Center), presented the poster “Incorporating Health into Developer Agreements: Health in All Policies in Action” at the American Public Health Association Annual Meeting and Exposition in Washington, D.C., November 1, 2011.



**Holly Avey**, associate project director (Georgia Health Policy Center), presented “Developing Healthy Communities” at the American Society of Landscape Architects along with Monte Wilson (HOK Atlanta) and Jack Sprott (McPherson Planning LRA), San Diego, CA, October 30, 2011.



**Rachel Ferencik**, senior research associate (Georgia Health Policy Center) and Chris Soderquist (Pontifex Consulting) co-presented a webinar sponsored by ISEE systems titled “Modeling Changes in Health Systems,” Atlanta, GA, November 18, 2011.



**Shelby Frost**, clinical associate professor (Economics) and director (GSU Center for Business and Economic Education), presented “Best Hits: Active Engagement of Undergraduate Students” at the Andrew Young School of Policy Studies, Atlanta, GA, November 11, 2011.



**James C. Cox**, professor (Economics), director (Experimental Economics Center), and the Noah Langdale Jr. Chair in Economics/Georgia Research Alliance Eminent Scholar, presented “Decision under Risk: Mechanisms, Paradoxes, and Dual Calibrations,” at the Plenary Lecture at the North American Meeting of the Economic Science Association in Tucson, November 11-12, 2011.





**Vjollca Sadiraj**, assistant professor (Economics), presented “Paradoxes and Mechanisms for Choice under Risk” at the 2011 North American Economic Science Association Conference, Tucson, Arizona, November 10-12, 2011.



**Bruce Seaman**, associate professor (Economics), presented “What Do We Know about Cultural Building Projects from 1994-2008?” to the CFO/ARTS group (a group of CFO's from major arts organizations in North America) at the Woodruff Memorial Arts Center in Atlanta on November 3, 2011.



**Paul Ferraro** (pictured), professor (Economics), presented “Conservation without Prices: heterogeneous treatment effects in a large-scale field experiment” with **Juan Jose Miranda**, Ph.D. student (Economics), at the Association of Public Policy and Management annual conference, Washington, D.C., November 4-6, 2011.

## Media Hits

**Paul Ferraro**, professor (Economics), was interviewed by Krissy Clark, Los Angeles Bureau Chief of *KQED Public Radio*, for a National Public Radio show on using insights from behavioral economics to design environmental policies and programs, November 11 and November 15, 2011.

**Bruce Seaman**, associate professor (Economics), was quoted on the degree to which the new international terminal at the Atlanta Hartsfield-Jackson International Airport is capable of serving as an engine of local economic development, *Atlanta Journal Constitution*, October 25, 2011.

**Robert Friedmann**, professor emeritus (Criminal Justice & Criminology) and director (GILEE) was quoted in the January 27, 2012, Wall Street Journal blog by Carl Bialik, “The Crime That’s Counted.”

<http://blogs.wsj.com/numbersguy/the-crime-thats-counted-1115/>.

## AYS Staff Receive Certification



**Ila Alfaro** (pictured left), associate to the director (Experimental Economics Center), and **Dorie Taylor** (pictured right), assistant director (Fiscal Research Center), were recently recognized by the University Research Services and Administration office (URSA) for achieving the national certification in Research Administration.

(<http://www.gsu.edu/research/43355.html>).

## Activities & Outreach

**Bruce Seaman**, associate professor (Economics), participated in a panel discussion titled "Recent Trends in Airport Concessions Models: Labor and Economic Issues," as part of the Airports Council International, Airports Concession Conference, Atlanta, GA, November 8, 2011. His July 2011 AYS working paper "The Airport Concession Industry: Important Issues and Trends" served as a focal point for the session. Working paper can be found at: [http://aysps.gsu.edu/files/11-31\\_Seaman-AirportConcessions.pdf](http://aysps.gsu.edu/files/11-31_Seaman-AirportConcessions.pdf).

**Bruce Seaman** chaired a session titled "Arts and Culture: Critical Evidence on Regional Differentiation and Economic Impact," and presented, "Economic Impact Calculators: Helpful Guides or Malicious Diversions," at the North American meetings of the Regional Science Association, Miami, FL, November 10, 2011.

## New Staff Joins Georgia Health Policy Center



**Debra L. Kibbe**, MS, joined the Georgia Health Policy Center as a senior research associate in October 2011. Before joining the GHPC, Kibbe served as director of the Physical Activity and Nutrition Program for the International Life Sciences Institute Research Foundation headquartered in Washington, D.C., where she worked since 1998.

The *Dean's E-News* is a feature published by the AYSPS Dean's Office. For publication in the next issue, please submit your news items by Thursday at 5:15 p.m. to **Gayon McFarquhar-Johnson** at [gayon@gsu.edu](mailto:gayon@gsu.edu)

## Awards



**Paul Ferraro** (pictured), professor (Economics), alumnus **Merlin Hanauer** (Ph.D. Economics, '11) and Katharine Sims (Amherst College), were awarded the 2011 Cozzarelli Prize for Class VI (Applied Biological, Agricultural, and Environmental Sciences) for their article, "Conditions associated with protected area success in conservation and poverty reduction," in the *Proceedings of the National Academy of Sciences (PNAS)*. The Cozzarelli Prize is awarded for a paper published in *PNAS* that has "outstanding scientific excellence and originality." Cozzarelli Prize winners are chosen from the more than 3,000 research articles published annually in *PNAS*, the second most cited scientific journal in the world. The authors will be recognized at the National Academy of Sciences Awards Ceremony in April. The award and the article can be found at: <http://www.pnas.org/site/misc/cozzarelliprize.shtml>.

## Publications



**David L. Sjoquist**, professor (Economics), director (Domestic Programs), and the Dan E. Sweat Distinguished Chair in Educational and Community Policy, and alumnus **John V. Winters** (Ph.D. in Economics '09), "Building the Stock of College-Educated Labor Revised," *Journal of Human Resources*, Winter 2012 47(1): 270-285.



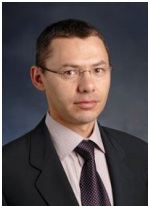
**Fred Brooks**, associate professor (School of Social Work) and T. Jaunzems (Toronto ACORN), "Community organizing in Egypt during and after the revolution," *Social Policy*, 41(4), 58-61, (2011).



**Fred Brooks**, associate professor (School of Social Work), **Terri Lewinson** (pictured), assistant professor (School of Social Work), alumnus **Jennifer Aszman** (Masters of Social Work '11), and **James Wolk**, professor (School of Social Work), "Voucher users and revitalized public housing residents 6 years after displacement," *Research on Social Work Practice*, 22(1), 10-19, (2011).



**Timothy Brezina** (pictured), associate professor (Criminal Justice and Criminology) and **Volkan Topalli**, associate professor (Criminal Justice and Criminology), "Criminal Self-Efficacy: Exploring the Correlates and Consequences of a 'Successful Criminal' Identity," *Criminal Justice & Behavior*, forthcoming.



Daniel Millimet (Southern Methodist University) and **Rusty Tchernis**, Associate Professor (Economics), "Estimation of Treatment Effects Without an Exclusion Restriction: with an Application to the Analysis of the School Breakfast Program," *Journal of Applied Econometrics*, forthcoming.



Robert Sandy (Indiana University-Purdue University Indianapolis), **Rusty Tchernis**, Jeff Wilson (Indiana University-Purdue University Indianapolis), Gilbert Liu (Indiana University-Purdue University Indianapolis), and **Xilin Zhou** (pictured), graduate student (Economics), "Effects of the Built Environment on Childhood Obesity: The Case of Urban Recreational Trails and Crime," *Economics and Human Biology*, forthcoming.

## Presentations

**Fred Brooks**, associate professor (School of Social Work), was a guest speaker at Campbell-Stone in Buckhead, Atlanta, on "Egypt and the Egyptian Revolution: Myths and Realities. January 26, 2012.

## Media Hits



**Michael J. Bell**, professor of practice (Public Management and Policy), was quoted in an *Atlanta Journal and Constitution* article January 25, 2012, concerning revenue projections and expenditure controls in a declining economy at the county level of government.

## Activities & Outreach

**Paul Ferraro**, professor (Economics), is an advisory board member of the *Conservation Strategy Fund*, which was a winner of a 2012 McArthur Award for Creative and Effective Institutions.



**Brian K. Payne**, professor and department chair (Criminal Justice and Criminology), was elected second vice president of the Academy of Criminal Justice Sciences.



**Wendy Guastafarro**, assistant professor (Criminal Justice and Criminology) was invited to participate in a hearing on accountability courts before the Georgia House of Representatives Public Safety Appropriations Subcommittee on February 6, 2011. Participants included officials from the Governor's Office, members of the Criminal Justice Coordinating Council, drug court directors, mental health court representatives and others.

## New Staff Join Georgia Health Policy Center



**Susan McLaren** joined the Georgia Health Policy Center as a Research Associate II in January. Previously she worked as a research associate II in the Center for Health Services Research at the J. Mack Robinson College of Business, a consultant to hospital systems at Cross Country with Gill Balsano Consulting, and an independent consultant working on numerous health services research and evaluation projects, including many with the GHPC. Susan earned her bachelor's degree and a Master of Public Health from Emory University.

The *Dean's E-News* is a feature published by the AYSPS Dean's Office. For publication in the next issue, please submit your news items by Thursday at 5:15 p.m. to **Gayon McFarquhar-Johnson** at [gayon@gsu.edu](mailto:gayon@gsu.edu)



## GHPC Sponsors Georgia Rural Health Day at Capitol



The **Georgia Health Policy Center** sponsored and participated in the Georgia Rural Health Association's (GRHA) Rural Health Day at the Capitol on February 16, 2012. Members of the GRHA are pictured here with Speaker of the House, David Ralston (pictured front center).

The **Georgia Health Policy Center** sponsored the 2012 AcademyHealth National Health Policy Conference held February 13-14 in Washington, DC. And also supported the State Health Research & Policy Interest Group Policy Breakfast at the meeting titled, "How States Can Support Delivery System and Payment Reforms."

## International Center for Public Policy Faculty at Cairo University



Top left, Sally Wallace teaching the public economics course participants in Egypt. Top right, Andrew Feltenstein teaching Macroeconomic Policies and Growth with Jeffrey Condon (seated on panel, far left) and Manal Metwaly, Cairo University (seated on panel, second from left)

The **International Center for Public Policy** has been engaged in a USAID-sponsored project, “Enhancing Capacity for Research in Economics,” awarded by Higher Education for Development and delivered in partnership with the University of Cairo. This activity is aimed at strengthening the capacity of Cairo University’s Department of Economics in economic research and enhancing their outreach to serve as a regional hub for teaching and research. One of the outcomes of this undertaking included the joint hosting of an economic policy seminar and training program in Egypt.

To fulfill this objective, GSU faculty travelled to Cairo in January. **Sally Wallace**, professor and chair (Economics) visited Cairo University on January 14, 2012, and gave a course on public economics to 19 participants. **Richard Luger**, associate professor (Economics and Risk Management and Insurance), traveled to Cairo on January 22, 2012, to deliver a five-day introduction to financial econometrics course to 31 participants.

**Andrew Feltenstein**, professor (Economics) and **Jeffrey Condon**, Ph.D. student (Economics) delivered presentations in collaboration with Manal Metwaly, a former visiting scholar at Georgia State University who is now a professor at the University of Cairo. They presented a seminar entitled “Macroeconomic Policies in Egypt” on January 17, 2012.

## Publications



**Lisa Muftić** (pictured), assistant professor (Criminal Justice and Criminology), and **Jennifer Cruze**, Ph.D. student (Criminal Justice and Criminology), "The laws have changed but what about the police?: What officers really think about policing intimate partner violence in post-conflict Bosnia," *Violence Against Women* forthcoming.



Sue-ming Yang (National Cheng University – Taiwan) and **Joshua C. Hinkle**, assistant professor (Criminal Justice and Criminology), "Issues in survey design: Using surveys of victimization and fear of crime as examples," in Lior Gideon (ed.), *The Handbook of Survey Methodology in Social Sciences*, Springer, forthcoming.

David Weisburd (George Mason University and Hebrew University – Israel) and **Joshua C. Hinkle**, "The importance of randomized experiments in evaluating crime prevention," in Brandon C. Welsh and David P. Farrington (eds.), *The Oxford Handbook on Crime Prevention*. Oxford University Press, forthcoming.



**Elizabeth Beck**, associate professor and director (Center for Collaborative Social Work), **Nancy P. Kropf**, (pictured) director and professor (School of Social Work), and Pamela Blume Leonard's book, *Social Work and Restorative Justice*, (Oxford University Press), was reviewed in the *Journal of Sociology & Social Welfare*, December 2011.



Daniel Millimet (Southern Methodist University) and **Rusty Tchernis**, associate professor (Economics), "Estimation of Treatment Effects Without an Exclusion Restriction: with an Application to the Analysis of the School Breakfast Program," *Journal of Applied Econometrics*, forthcoming.



**Rusty Tchernis**, Robert Sandy, Jeff Wilson and Gilbert Liu (Indiana University-Purdue University Indianapolis), and **Xilin Zhou** (pictured), Ph.D. student (Economics), "Effects of the Built Environment on Childhood Obesity: The Case of Urban Recreational Trails and Crime," *Economics and Human Biology*, forthcoming.

## Presentations



**Harvey K. Newman** (pictured), chair and professor (Public Management and Policy), made a presentation on “Leadership, You, and the Economy” to the high school students participating in the 36<sup>th</sup> Annual Conference of the Georgia Council on Economic Education. Also on the program was **Michael Mescon** of the AYS Advisory Board. The conference was held at the GSU Student Center on February 27, 2012.



**Paula Stephan**, professor (Economics), recently gave several seminars:

- “How to Make Science an Engine of Growth: Getting Incentives Right is Important” at the Bruegel Institute, Brussels, February 15, 2012.
- “Funding for Scientific Research: Getting Incentives right is Important” at the Observatoire des science et techniques, Paris, February 17, 2012.
- “How Science Shapes Economics” at CEPII, Paris, February 14, 2012



**Debra Kibbe**, senior research associate (Georgia Health Policy Center), presented “Hungry and Heavy: What ingredients are needed for change?” at the Southeastern Executive Chef’s Table in Georgia on February 25, 2012. This inaugural event was a twelve-state summit to discuss obesity, hunger and health of children and families.

Pictured from left to right: Barbara Fairchild, former editor-in-chief of Bon Appétit Magazine, moderator for the event; Christi Kay, executive director of HealthMPowers; Holly Chute, executive chef for Governor Deal; and **Debra Kibbe**.



**Jan Ligon**, associate professor (School of Social Work), was an invited presenter for a conference in London, England titled “Evidence-based Interventions for Working with Families Affected by Substance Misuse” at historic Guildhall (c. 1440) February 28, 2012.



**Jan Ligon**, presented a workshop titled "Tools and Techniques to Help Families and Significant Others Who Are Affected by Substance Misuse" to the Irish Association of Social Works, Dublin, Ireland, February 24, 2012

## Media Hits

**Jan Ligon**, associate professor (School of Social Work) and a former state licensure board member, was included in an article in the *Atlanta Journal Constitution* about issues related to a potential restructuring of the state's licensure boards, "Changes to licensing proposed for half-million Georgians," February 21, 2012. Article can be found at: <http://www.ajc.com/news/georgia-government/changes-to-licensing-proposed-1356959.html>.

**Paula Stephan's**, professor (Economics), research was the feature of an article in *Le Figaro*, February 18, 2012: "Pourquoi les chercheurs étrangers établis aux États-Unis sont bien plus performants que les Américains." *Le Figaro* has the widest circulation of any daily in France.



**Barry Hirsch**, professor (Economics) and the W.J. Urey Chair of the American Workplace, was interviewed and quoted in an Arizona public radio interview and a story by Paul Atkinson titled, "Anti-public employee union bills as much about politics as policy," NPR affiliate KJZZ, Tempe, Arizona, February 19, 2012. Article can be found at: <http://kjzz.org/content/1202/anti-public-employee-union-bills-much-about-politics-policy>.



**Barry Hirsch** and **Rachana Bhatt**, (pictured) assistant professor (Economics), were interviewed by *Atlanta Journal Constitution* reporter Willoughby Mariano for the PolitiFact.com column "Gingrich: Main reason for unemployment decline is shrinking workforce," *Atlanta Journal Constitution*, February 29, 2012. Article can be found at: <http://www.politifact.com/georgia/statements/2012/feb/29/newt-gingrich/gingrich-main-reason-unemployment-decline-shrinkin/>



**Julie Hotchkiss**, adjunct professor (Economics) and research economist and policy advisor, "Jobs Calculator" was cited by *CNBC* and Paul Krugman at: <http://www.cnbc.com/id/46626931/> and <http://krugman.blogs.nytimes.com/2012/03/05/not-again-with-the-pivot/>



## Activities and Outreach



**Erdal Tekin**, associate professor (Economics), has been appointed as an associate editor for the *IZA Journal of Labor Policy*, a new journal launched by the Institute for the Study of Labor (IZA) in Germany.



**Glenn M. Landers**, associate project director (Georgia Health Policy Center), was appointed to the Aged, Blind, and Disabled Task Force for Georgia's Medicaid Redesign by the Georgia Department of Community Health.

The **Georgia Health Policy Center** and partners in the Atlanta area are working collectively toward developing a collaborative that is responsible for a regional health needs assessment, community engagement, analysis of implementation options and monitoring of progress over time. This approach could potentially lower the cost to individual partners, meet regulatory needs and timelines of individual partners, and support health improvement at the regional level. At a recent meeting including the GHPC, Atlanta Regional Commission, Centers for Disease Control and Prevention, United Way of Metropolitan Atlanta, Philanthropic Collaborative for a Healthy Georgia, Georgia Department of Public Health, and Fulton and DeKalb Boards of Health, seven hospitals and hospital systems indicated agreement to pursue the collaboration further.



The **International Center for Public Policy** is pleased to host Roberto Dell'Anno as a visiting scholar from March-May 2012. Roberto is an assistant professor of public economics in the Department of Economics at the University of Foggia, Italy. He holds a doctoral degree from the University of Salerno in Italy, and was a Marie Curie Fellow at the Department of Economics at Aarhus University (Denmark).

Dell'Anno's research focuses primarily on public economics and his research interests focus on the shadow economy, tax evasion, fiscal illusion, structural equation modeling and bibliometrics. He has published numerous articles in journals such as *Applied Economics*, *Comparative Economic Studies*, *Constitutional Political Economy*, *Economia Pubblica*, and *Empirical economics*.

The *Dean's E-News* is a feature published by the AYSPS Dean's Office. For publication in the next issue, please submit your news items by Thursday at 5:15 p.m. to **Gayon McFarquhar-Johnson** at [prcgmjx@langate.gsu.edu](mailto:prcgmjx@langate.gsu.edu).

## Publications



**James Marton**, associate professor (Economics), and Marco Castaneda (Tulane University). "Employer Provided Health Insurance and the Adverse Selection Problem," *Public Finance Review*, forthcoming. The article can be found at:

<http://pfr.sagepub.com/content/early/2012/03/28/1091142111434594>



**Levent Bulut**, visiting assistant professor (Economics), and Esfandiar Maasoumi (Emory University), "Predictability and Specification in Models of Exchange Rate Determination," in N. Rasmus Swanson and C. Xiaohong (Eds.), Causality, Prediction, and Specification Analysis: Recent Advances and Future Directions: Essays in Honor of Halbert L. White Jr. Springer Publications. forthcoming.



**James C. Cox**, professor (Economics), director (Experimental Economics Center) and the Noah Langdale Jr. Chair in Economics/Georgia Research Alliance Eminent Scholar, and Duncan James (Fordham University), "Clocks and Trees: Isomorphic Dutch Auctions and Centipede Games," *Econometrica*, March 2012.



**Bruce Kaufman**, professor (Economics), "Strategic Human Resource Management in the USA: A Failing Grade after Thirty Years?" *Academy of Management Perspectives*, forthcoming.



**Nevbahar Ertas**, alumus (Ph.D. Public Policy '07 and now at the University of Alabama at Birmingham) and **Christine Roch** (pictured), associate professor (Public Management and Policy), "Charter Schools, Equity, and Student Enrollments: The Role of For-profit Educational Management Organizations," *Education and Urban Society*, forthcoming.



**Paula Stephan**, professor (Economics), “Perverse Incentives,” *Nature*, April 5, 2012. This article was one of three on incentives that the journal invited and featured on its cover. Stephan was also interviewed by *Nature* for its April 5<sup>th</sup> podcast. <http://www.nature.com/nature/podcast/index-2012-04-05.html>

**Ketra Rice**, visiting Fulbright Scholar/part time instructor (Economics), “The Utility of Multilevel Modeling vs. Agent-Based Modeling in Examining Spatial Disparities in Diet and Health: The Case of Food Deserts,” in A. Desai (Ed.), *Simulations for Policy Inquiry*, New York, NY: Springer, forthcoming.

## Presentations



**Michael J. Bell**, professor of practice (Public Management and Policy) presented “The PROS and CONS of Privatizing/Outsourcing Certain Local Governmental Services: An Actual Three County Comparison,” to the League of Women Voters, March 10, 2012.



**Bill Waugh**, professor (Public Management and Policy) presented “Management Capacity and Rural Community Resilience,” at the Community Resilience and Sustainability Workshop sponsored by the University of Central Florida and the U.S. Department of Agriculture, Orlando, FL, March 29-30, 2012.

**Paula Stephan**, professor (Economics), gave three lectures at the Ecole Polytechnique Federale de Lausanne (EPFL) during the week of March 25<sup>th</sup>. The first, entitled “Present and Future of U.S. Academic Research System: Potential Problems and Lessons for Switzerland” was presented as a policy forum. The second was a research seminar entitled “The Contribution of the Foreign Born and the GlobSci Project.” The third, “Economics of Science: Next Challenges, Issues, and Research Questions,” was presented at a workshop for Ph.D. students.

## Media Hits



**Janelle A. Kerlin**, assistant professor (Public Management and Policy), was interviewed by *polit.ru*, an on-line Russian news journal, regarding her book, Social Enterprise: A Global Comparison. The interview was posted under the title, "Social Entrepreneurship," March 23, 2012, <http://polit.ru/article/2012/03/23/Kerlin/> in Russian.



**Peter Bluestone**, senior research associate (Fiscal Research Center), was quoted by the *Atlanta Journal Constitution*, April 4, 2012, in "Georgians Torn Over Tax on Internet Sales." Article can be found at: <http://www.ajc.com/news/georgia-government/georgians-torn-over-tax-1406660.html>.

**Paula Stephan**, professor (Economics), was quoted in the article by Carl Zimmer entitled "A Sharp Rise in Retractions Prompts Calls for Reform," in the *New York Times*, April 17, 2012. The article can be found at: <http://www.nytimes.com/2012/04/17/science/rise-in-scientific-journal-retractions-prompts-calls-for-reform.html>.

**Paula Stephan's** book, How Economics Shapes Science was reviewed in the *Times Higher Education*, on April 12, 2012. The review can be found at: <http://www.timeshighereducation.co.uk/story.asp?sectioncode=26&storycode=419590&c=1>.

**Bill Waugh**, professor (Public Management and Policy), was interviewed by Mike Oliver, reporter for *The Birmingham News* on the 2011 Tuscaloosa tornado and recovery efforts after the tornado outbreak, and was also interviewed by Cathy Grossman, reporter for *USA Today*, on FEMA's performance since the problems experienced during the Hurricane Katrina disaster in 2005 and improvements seen during the 2011 tornado outbreak.

**James C. Cox**, professor (Economics), director (Experimental Economics Center) and the Noah Langdale Jr. Chair in Economics/Georgia Research Alliance Eminent Scholar, and Duncan James (Fordham University) were interviewed by a reporter for *Channel 2 Action News* for a story titled "Georgians vie for Mega Millions," about Georgians' frenzied play of the lottery. An online version of the story can be found at: <http://www.wsbtv.com/news/news/local/mega-millions-sets-record-476m-jackpot/nLfBc/>.

## Awards & Honors



**Terri Lewinson**, assistant professor (Social Work), has received the John A. Hartford Geriatric Scholar Award, which comes with \$100,000 to conduct health-related research with older adults. To find out more about the program and award, please visit: <http://www.gswi.org/programs/hfs.html>.

## Center Publications



**David L. Sjoquist**, professor (Economics), director (Domestic Programs), and the Dan E. Sweat Distinguished Chair in Educational and Community Policy, "An Inventory of Transportation Funding Options," *FRC Report 239* (February 2012). This report provides a discussion of the advantages and disadvantages of various options for funding transportation. The report can be found at: [http://aysps.gsu.edu/images/Rpt\\_239FIN.pdf](http://aysps.gsu.edu/images/Rpt_239FIN.pdf).

Additional FRC reports and briefs can be found at: <http://aysps.gsu.edu/frc/3786.html>.



**Andrew Hanson** (pictured), assistant professor (Economics), and alumnus **Zackary Hawley** (Ph.D. in Economics '12), "Federal Tax Burden and Tax Breaks for Georgia Residents," *FRC Report 238* (January 2012). This report examines the federal taxes paid and the tax breaks received by Georgia residents, placing them in context of other U.S. states. The report can be found at: [http://aysps.gsu.edu/images/Rpt\\_238FIN1A.pdf](http://aysps.gsu.edu/images/Rpt_238FIN1A.pdf). Additional FRC reports and briefs can be found at: <http://aysps.gsu.edu/frc/3786.html>.



## Activities and Outreach



**Carol Hansen**, associate professor (Public Management and Policy), will teach in the graduate programs for business and psychology at the Universities of Strasbourg (France), Northumbria (United Kingdom), and Valencia (Spain) next year. Hansen served on the Sub-Saharan review panel for the Boren Fellowship for national security education in Washington, D.C., March 12-13, 2012.



**Susan Laury**, associate professor (Economics), has conducted an analysis of publishing trends in experimental economics during the decade 2001 – 2010, looking at the citation counts for papers that report new experimental data (as distinct from surveys, opinion pieces, etc...).



**Nancy Kropf**, professor and director (Social Work), was elected to serve on the Board of Directors for the National Association of Deans and Directors of Schools of Social Work. Her three-year term begins June 1.



**Brian Payne**, professor and chair (Criminal Justice and Criminology), was appointed to the editorial board of the *Journal of Elder Abuse and Neglect*.



**Barbara Warner**, associate professor (Criminal Justice and Criminology), was appointed to the editorial board of *Criminology*.

**Paula Stephan**, professor (Economics), has been appointed to the Board of Reviewing Editors of the journal *Science* for a two-year term.

**Bill Waugh**, professor (Public Management and Policy), attended the Emergency Management Accreditation Program Commission's spring strategic planning and executive meetings in Lexington, KY, April 11-13, 2012.

**2012 Co-Ed Intramural Softball**  
**Young School Raiders**  
 (regular season: 4-3, playoffs: 0-1)



**Top:** Angie Snyder (GHPC), Greg Reihing (PMAP), Jenny Giarratano (Dean's Office), Danyang Li (Econ), Margo Doers (FRC), Kelly Wilkin (Econ), Debbie Kibbe (GHPC), Huiping Du (FRC)

**Bottom:** Lorenzo Almada (Econ), Gustavo Canavire-Bacarreza (ISP), Jim Marton (Econ), Michael Marton

**Not Pictured:** Josh Merfeld (PMAP), Shelby Frost (Econ), Seth Kroop (PMAP), Shelly-Ann Williams (OAA), Andy Balthrop (Econ), Zack Hawley (Econ), Julia Manzella (Econ), Spencer Bhanzaf (Econ), Rusty Tchernis (Econ), Dennis Young (PMAP), Felix Rioja (Econ)

The *Dean's E-News* is a feature published by the AYSPS Dean's Office. For publication in the next issue, please submit your news items by Thursday at 5:15 p.m. to **Gayon McFarquhar-Johnson** at [prcgmjx@langate.gsu.edu](mailto:prcgmjx@langate.gsu.edu).

## Professor David Card presents the 8<sup>th</sup> Annual W.J. Usery Distinguished Lecture



David Card, the Class of 1950 Professor of Economics at the University of California, Berkeley, was invited to campus to give the Usery Lecture on April 19, 2012. Titled "*Peer Effects in Labor Markets, Neighborhoods, and Among Friends*," Card's presentation summarized his recent research on the topics of neighborhood segregation and racial "tipping," attitudes toward immigrants, the pleasure or displeasure of employees on learning their co-workers' salaries, and how teenagers' sexual activity is influenced by the behavior of their friends.

Before the lecture, Card met informally with faculty and doctoral students in Economics to discuss their research. He also attended a luncheon with AYSPS faculty and other area labor economists hosted by **Barry Hirsch**, professor (Economics) and the W.J. Usery Chair of the American Workplace.

For more information please see: <http://aysps.gsu.edu/uwrg/distinguished-lectures/david-card>.

## Publications



**Bruce Kaufman**, professor (Economics), "An Institutional Economic Analysis of Labor Unions," *Industrial Relations* (April 2012), pp. 438-71.



**Janelle A. Kerlin**, assistant professor (Public Management & Policy), "Predicting Variation in Funding for International Nongovernmental Organizations following Three External Events," *Nonprofit Management and Leadership*, forthcoming.



**Lisa Muftić** (pictured), assistant professor (Criminal Justice & Criminology) and Irma Deljić, (University of Sarajevo Bosnia), "Exploring the overlap between offending and victimization within intimate partner violence in Bosnia and Herzegovina," *International Criminal Justice Review*, 22(2). In-press.



**Lisa Muftić**, **Mary Finn** (pictured), professor (Criminal Justice & Criminology) and **Erin Marsh**, Ph.D. student (Criminal Justice & Criminology), "The victim-offender overlap, intimate partner violence, and sex: Assessing differences among exclusive victims, exclusive offenders, and victim-offenders," *Crime & Delinquency*, forthcoming.

## Presentations



**Barry Hirsch** (pictured), professor (Economics) and W.J. Usery Chair of the American Workplace, presented "An Anatomy of Racial and Ethnic Trends in Male Earnings," with alumnus **John Winters** (Ph.D. Economics '09 and now with the University of Cincinnati) at the Society of Labor Economists Meetings, Chicago, May 4-5, 2012.

**Lisa Muftić**, assistant professor (Criminal Justice & Criminology) presented "Law enforcement responses to sex trafficking in Bosnia-Herzegovina: An exploratory analysis of the border police" at the 2012 Regional Policy Symposium Transnational Crime and Corruption in Eastern Europe and Eurasia, International Research and Exchanges Board (IREX), U.S. Department of State in Washington, D.C., April 2012. The paper was also presented in poster format at the 2012 Analytical Exchange Event, U.S. Department of State, Washington, D.C., April 2012.

## Media Hits



The research of **Gregory B. Lewis**, professor (Public Management & Policy), was highlighted in Ezra Klein's Wonkblog titled "A public-opinion specialist parses the polls on gay marriage" in *The Washington Post*, May 10, 2012. Article can be found at: [http://www.washingtonpost.com/blogs/ezra-klein/post/parsing-the-polls-on-gay-marriage/2012/05/10/gIQApg3lGU\\_blog.html#pagebreak](http://www.washingtonpost.com/blogs/ezra-klein/post/parsing-the-polls-on-gay-marriage/2012/05/10/gIQApg3lGU_blog.html#pagebreak).

**Gregory B. Lewis** published a guest blog titled "If Same-Sex Marriage Is so Popular, Why Does It Always Lose at the Ballot Box?" at *The Monkey Cage*, May 15, 2012. Article can be found at: <http://themonkeycage.org/blog/2012/05/15/if-same-sex-marriage-is-so-popular-why-does-it-always-lose-at-the-ballot-box-includes-state-level-data-on-support-and-legislation/>.

**Barry Hirsch**, professor (Economics) and W.J. Usery Chair of the American Workplace, was interviewed and had his research described in an article by Larry Swisher, "Declining Unionization Tied to Job Losses, Increased Economic Competition, Employers," in the *Bloomberg BNA Daily Labor Report*, May 2, 2012.



**Barry Hirsch** was interviewed and quoted in an article by Mike Maciag titled "Labor Force Participation Declines in States, Inflates Jobless Rate," in *Governing* magazine, May 14, 2012. Article can be found at: <http://www.governing.com/blogs/by-the-numbers/Labor-Force-Participation-Declines-in-States-Inflates-Jobless-Rate.html>.

## Activities and Outreach



**Katherine Willoughby**, professor (Public Management & Policy), served on a panel at the conference *Governing Georgia: A Leadership Forum*, April 26, 2012, at the Marriott Marquis, Atlanta.

## Congratulations

**Terrie Buckner**, program director (Professional Excellence Program, School of Social Work) was awarded a Doctor of Education Degree from the University of Georgia on May 11, 2012. Her concentration was Adult Education and Human Resources and Organizational Development. Terrie is program director for the Professional Excellence Program, a partnership between the School of Social Work and Georgia DFCS that provides training and technical assistance for the state's veteran social workers.



**Janelle A. Kerlin**, assistant professor (Public Management & Policy), and her husband Clayton Bassett welcomed daughter Sarah Elizabeth Bassett, who was born at 5:46 a.m. on Wednesday, May 9, 2012, at 6lbs. 8oz. and 19 in. Both mother and baby are doing well.

The *Dean's E-News* is a feature published by the AYSPS Dean's Office. For publication in the next issue, please submit your news items by Thursday at 5:15 p.m. to **Gayon McFarquhar-Johnson** at [gayon@gsu.edu](mailto:gayon@gsu.edu).



## From the Dean



I hope everyone had a productive and enjoyable summer – I can't believe we are starting the semester already! And the AYS is starting the fall semester with 17 new faculty members. We are very happy that you have joined us and we all look forward to working with you this year.

There are a couple of items that are coming up soon, and I want you to be aware of them. First, the university has adopted a new promotion and tenure manual. All colleges are charged with ensuring that their unit P&T manual is in agreement with university policies. Associate Dean Robert Moore, Donna Hader, and I have worked on this and suggested some changes based on the issues that we saw. These proposed changes are now in the hands of the AYS College P&T committee for their review. Soon we will send out the revised manual for an electronic vote. I hope you will take a look at these in order to be ready for the vote.

And did you know that 2013 is the centennial year for Georgia State University? The university and the colleges are all planning events to celebrate our 100<sup>th</sup> anniversary. If you have ideas for events that would align with an anniversary celebration, please let us know.

## AYSPS Co-Sponsors Conference



The 4<sup>th</sup> Annual Meeting on the Economics of Risk Behaviors (AMERB) was held in Istanbul, Turkey between April 27-29, 2012. The conference is organized by **Erdal Tekin**, professor (Economics) and Amelie Constant (George Washington University and IZA)

with the joint sponsorship of Andrew Young School, Center for the Economic Analysis of Risk at GSU, Bahcesehir University, Turkey, and the Institute for the Study of Labor (IZA), Germany. This year's venue was the beautiful campus of Bahcesehir University, located by Bosphorus Istanbul. Researchers had a chance to present their work on highly

interesting and important questions related to risky behaviors combined with state-of-the-art methodologies. Fourteen papers were selected for the conference from about 100 submissions. Among the topics included the impact of the 9/11 terrorist act on discrimination in the judicial system, the impact of drug decriminalization policies on crime, and the link between emotional cues and birthweight. The keynote lecture in this year's event was delivered by Stephen Machin (University College London and IZA), who gave an interesting talk on the effect of the 2005 metro terrorist bombing in London on hate crimes against individuals from certain ethnicities. For more information, please see:

<http://aysps.gsu.edu/econ/faculty/erdal-tekin>.

## Publications



**Bruce Kaufman**, professor (Economics), "History of the British Industrial Relations Field Reconsidered: Getting from the Webbs to the New Employment Relations Paradigm," *British Journal of Industrial Relations*, forthcoming.



**Paula Stephan**, professor (Economics), and Henry Sauermann (Georgia Institute of Technology), "A Multidimensional View of Industrial and Academic Science," *Organization Science*, forthcoming.



**Brian Payne**, professor and chair (Criminal Justice and Criminology), "You're so vain you probably think this keynote is about you: Expanding art and music in criminal justice," *American Journal of Criminal Justice*, 2012, Vol. 37, No. 3, Pages 291-305. Article can be found at:

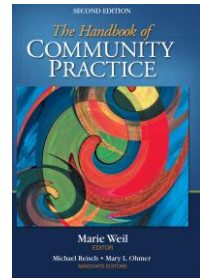
<http://www.springerlink.com/content/t357t87w44850400/>.



**Christina Policastro** (pictured), Ph.D. student (Criminal Justice and Criminology) and **Brian Payne**, "The Blameworthy Victim: Domestic Violence Myths & the Criminalization of Victimhood," *Journal of Aggression, Maltreatment, and Trauma*, forthcoming.



**Mary L. Ohmer**, associate professor (Social Work), and Michael Reisch (University of Maryland) (Associate Editors) and Marie Weil (University of North Carolina, Chapel Hill) (Editor), The Handbook of Community Practice, Second Edition, Sage Publications, Inc., July 2012.



## Presentations

**Paula Stephan**, professor (Economics), was invited to be the external speaker at the Alfred P. Sloan Foundation's Annual Retreat, Greenwich, Connecticut, May 17, 2012. The subject was "How Economics Shapes Science."

**Paula Stephan** was the invited keynoter at the conference Science Economy at the ZEW, "Economics of Science: Robust Findings, Open Questions and Lines for New Research" in Mannheim, Germany, May 31, 2012.

**Paula Stephan** presented "The Contribution of the Foreign Born and the GlobSci Project," a seminar at the University of Kassel, Germany, June 6, 2012.



**Dennis Young**, professor (Public Management and Policy) and director (Nonprofit Studies Program) made a presentation on education for nonprofit leadership to a delegation of Chinese NGO and Foundation leaders hosted by the Woodruff Foundation and the Foundation Center, April 18, 2012.



**Bruce Seaman**, associate professor (Economics), presented "The major public policy issues in cultural economics: the effects of recent research," at the University of Chile, Santiago de Chile, May 7, 2012. He is also working on potential collaborative research efforts with several economists at the University of Chile.



**Robin Hartinger-Saunders**, assistant Professor (School of Social Work) and Christine M. Rine, (Plymouth State University) presented "An Integrated Approach to the Transfer of Learning in Child Welfare Curricula" at the 2012 National Roundtable for Title IV-E in Galveston, Texas, May 30-June 1, 2012.

## Media Hits

**Bruce Seaman**, associate professor (Economics), was interviewed on *National Public Radio (Georgia PBS)*, on issue of the economic implications of the new International Terminal at Hartsfield-Jackson International Airport, May 16, 2012.

**Bruce Seaman** was interviewed on *NPR (Georgia PBS)* on issue of the economic arguments for and against horse racing and gambling in the State of Georgia, March 21, 2012.

**Bruce Seaman** was interviewed by Richmond Virginia, *WTVR CBS Channel 6* on his research on the Atlanta Housing Authority's mixed income community renovations.

**Paula Stephan**, professor (Economics), *NBER* working paper number 18067 "Foreign Born Scientists: Mobility Patterns for 16 Countries" (joint with Chiara Franzoni and Giuseppe Scellato) was featured in an article in *Inside Higher Education* May 15, 2012.

<http://www.insidehighered.com/news/2012/05/15/study-examines-migration-patterns-scientists#ixzz1uwM39XaG>.

and in *The Times Higher Education* May 24, 2012.

<http://www.timeshighereducation.co.uk/story.asp?sectioncode=26&storycode=420053&c=1>.

**Paula Stephan** was quoted in an article in *Inside Higher Education* May 24, 2012, concerning the recruitment of Indian expats back to teach at ITT.

<http://www.insidehighered.com/news/2012/05/24/premier-indian-engineering-institute-wants-open-us-office>.

**Mary Beth Walker**, dean (AYSPS) and professor (Economics), was quoted in the *Atlanta Journal Constitution*, "There is no credible explanation that has been offered except that cheating occurred," for the article "Principal tells APS tribunal she isn't 'responsible' for teachers" May 7, 2012.

<http://www.ajc.com/news/atlanta/principal-tells-aps-tribunal-1432933.html>.

## Activities and Outreach



**Bill Waugh**, professor (Public Management and Policy), guest lectured (via Skype) in an emergency management doctoral seminar at Oklahoma State University, May 17, 2012.



**Jesse Lecy** (pictured), assistant professor (Public Management and Policy) and **Dennis Young**, professor (Public Management and Policy) and director (Nonprofit Studies Program), served as members of the Innovation Hub Advisory Review Panel for HandsOn Network/Points of Light, a national network that promotes volunteering in Atlanta, May 2, 2012.

**Dennis Young** served as a presenter and panelist in the INCAE Business School Think Forward – Latin America Forum in San Jose, Costa Rica, speaking on the subject of socially responsible and sustainable business, May 12-25, 2012.



The Andrew Young School and the Robinson College hosted the fifth annual residential session of the CIES/University of Barcelona master's degree programs on Social Economy and Corporate Social Responsibility. **Janelle Kerlin Bassett**, (pictured) assistant professor (Public Management and Policy), **Dennis Young**, and Steve Olson (J. Mac Robinson College of Business) spoke to fifteen program participants from Europe and Latin America, May 7-11 2012.

**Brian Payne**, professor and chair (Criminal Justice and Criminology) and Matthew DeMichelle (Pennsylvania State University), Community Supervision Workload Considerations for Public Safety, a Technical Report published by the Bureau of Justice Assistance and the American Probation and Parole Association.

## Congratulations



**Jaiwan Harris**, business manager (Domestic Programs) and Sekeia Harris, administrative specialist - curriculum (College of Arts and Sciences) welcomed son, Nile Mason Harris, who was born at 8lbs 3oz, 20 inches long on July 12, 2012 at 6:55pm.



**Megan Phillips**, masters student (Public Management & Policy), and her husband Chester Phillips, assistant professor (School of Music) officially adopted on May 30<sup>th</sup> their daughter Tarpley Rose, who was born at 6lbs. 6oz. at 4:01 a.m. in Louisiana on Friday, May 25, 2012.

The *Dean's E-News* is a feature published by the AYSPS Dean's Office. For publication in the next issue, please submit your news items by Thursday at 5:15 p.m. to **Gayon McFarquhar-Johnson** at [prcgmjx@langate.gsu.edu](mailto:prcgmjx@langate.gsu.edu).



## AYSPS Welcomes Indonesian Master's Degree Students



A second group of 15 students participating in the USAID Dual Master's Program in Applied Economics arrived on campus on July 2 for the International Center for Public Policy's summer Public Policy Training program. Their program will run through December 2013.

Before flying to Atlanta, the new AYSPS students enjoyed a reception with the U.S. Ambassador to the Republic of Indonesia, Scot Marciel (top left). Pictured: From the front row, left, are Raya Soendjoto (USAID), Wesly Febriyanta Sinulingga, Erica Novianti Lukas, Riza Azmi, Martin Hasiholan Lumbantobing, Nugraheni Kusumaningsih and Dewa Putu Ekayana. Second row, from left, are Eko Wicaksono, Arfan Udi Winasis, Nova Mardianti, AYSPS alumna **Arti Adji** (Ph.D. Economics '06 and now director of the graduate program in economics at Universitas Gadjah Mada and our partner in the program), Ambassador Marciel, Raya Dumaris Simanjuntak, Lili Mutiary, USAID Mission Director Glenn Anders, Ferry Afi Andi, Zainul Arifin, Bondi Arifin and Brian Dusz (USAID).

## Campus Campaign and Faculty Staff Donor Listing



You have recently received materials promoting faculty and staff giving opportunities through the "Raise Your Hand" Campus Campaign. Please take a moment to consider making a gift to support your Department or the Andrew Young School. Your gift can be made via payroll deduction or as a one-time gift. There are also many options for where you may choose to designate your gift. If you are already participating in the Campus Campaign and wish to make any changes to your current giving preferences, you can do that at this time. Please contact Alicia Brady, AYSPS Development Director, if you have any questions or need more information: [abrady@gsu.edu](mailto:abrady@gsu.edu), 3-0009.

The Andrew Young School is extremely proud and appreciative of the donations made by our faculty and staff. Your participation in the Campus Campaign makes an important statement to the University community and to our external donors. In an effort to recognize the generosity of our faculty and staff donors, we will begin publishing an annual listing of these donors in the Dean's ENews at the end of the fiscal year. Our first donor recognition list will be published in the next edition of the Dean's ENews and will list our donors from FY12. We want to honor all donors' personal preferences for recognition, therefore if you prefer for your gifts to be made anonymously and not have your name listed, please let Alicia Brady know.

## Awards



**Karen Minyard**, executive director (Georgia Health Policy Center), associate research professor (Public Management and Policy), was presented the Georgia Health Sciences University College of Nursing's E. Louise Grant Award for Excellence in Clinical Practice, Administration and Community Service. One of seven distinguished alumni at GHSU's Homecoming, Minyard spoke at the Distinguished Alumni Lecture along with Dean Marion Broome on Friday, April 27, 2012.



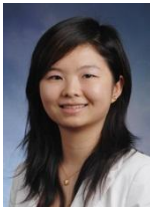
**Erdal Tekin**, professor (Economics), was recognized for his efforts as an editor for the *Journal of Population Economics* at the European Society of Population Economics Meetings in Bern, Switzerland, June 2012. The *Journal of Population Economics* is published by Springer and is housed at the Institute for the Study of Labor (IZA) in Bonn, Germany.

**Erdal Tekin** visited the headquarters of Swiss Re, the world's second largest reinsurance company, in Zurich to explore opportunities for collaboration in support of the international conference on the economics of risky behaviors (AMERB) he organizes every year. Swiss Re agreed to hold next year's conference at its Center for Global Dialogue in Zurich and provide sponsorship in the amount of approximately 65,000 Swiss francs.

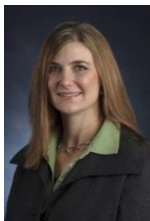
## Publications



**Bruce Kaufman**, professor (Economics), "Strategic Human Resource Management in the USA: A Failing Grade after 30 Years", *Academy of Management Perspectives* (May 2012): 1-63.



**Cathy Yang Liu** (pictured), assistant professor (Public Management and Policy), and **Wen Xie**, graduate student (Public Management and Policy), "Creativity and Inequality: The Dual Path of China's Urban Economy?" *Growth and Change*, forthcoming.



**Robin Hartinger-Saunders**, assistant professor (School of Social Work), C.M. Rine (Plymouth State University), T. Nochajski (Buffalo State College), and W. Wiczorek (University at Buffalo), "Neighborhood crime and perception of safety as predictors of victimization and offending among youth: A call for macro-level prevention and intervention models," *Children and Youth Services Review*, 2012. <http://dx.doi.org/10.1016/j.childyouth.2012.05.020> .

**The Georgia Health Policy Center** released the policy note, "The Supreme Court Ruling on the ACA: What will it mean for Georgians?" on Friday, June 29, 2012. Find it online at:

<http://aysps.gsu.edu/sites/default/files/documents/Supreme%20Court%20Ruling%20on%20the%20ACA%281%29.pdf>

## Presentations



**Julie Hotchkiss** (pictured), adjunct professor (Economics), and research economist and policy advisor (Federal Reserve Bank of Atlanta), **Robert E. Moore**, associate dean (AYSPS) and associate professor (Economics), and **Fernando Rios-Avila**, Ph.D. student (Economics), “Assessing the Welfare Impact of Tax Reform: A Case Study of the 2001 U.S. Tax Cut.” Presented at the 11th Journees Louis-Andre Gerard-Varet Conference in Public Economics, Marseille, France, June 18-20, 2012.



**Dennis Young** (pictured), professor (Public Management and Policy), chaired several panels and delivered two papers at the 10<sup>th</sup> International Conference of the International Society for Third Sector Research in Siena, Italy, on July 10-13. He presented “Can Social Enterprises Remain Stable and Mission-Focused? Applying Resiliency Theory,” written with **Choony Kim**, Ph.D. student (Public Management and Policy) and “The State of Theory and Research on Social Enterprise.”



**Beverly Tyler**, associate project director and Community Health Systems Development team director, (Georgia Health Policy Center), presented “You’ve Got a Friend in Technical Assistance” at the Health Resources and Services Administration’s Rural Health Care Services Outreach Annual Grantee Meeting on June 19, 2012, in Washington, D.C.

Also presenting at the Health Resources and Services Administration’s Rural Health Care Services Outreach Annual Grantee Meeting were:

**Karen Minyard**, executive director (Georgia Health Policy Center), associate research professor (Public Management and Policy), presented “The Diffusion of Innovation: Applying Best Practices to Community Health Interventions.”



**Amanda Phillips Martinez**, senior research associate, (Georgia Health Policy Center), presented “Improving your Potential for Sustainability – Gaining Leverage from the Experiences of Former Grantees.”



**Tanisa Adimu** (pictured), senior research associate, and **Tina Smith**, consultant (Georgia Health Policy Center), presented “Policy, Systems, and Environment – Oh My!”





**Kristi Fuller**, research associate II (Georgia Health Policy Center), presented “Are Money Follows the Person Program Participants Better Off? A Pre-Post- Analysis of Quality of Life” at the AcademyHealth Annual Research Meeting on June 26, 2012, in Orlando. The presentation is online at: <http://www.slideshare.net/ghpc/are-money-follows-the-person-program-participants-better-off-a-pre-post-analysis-of-quality-of-life>.

Also presenting at the AcademyHealth Annual Research Meeting were:



**Rachel Ferencik**, senior research associate (Georgia Health Policy Center), presented “Systems Thinking, Conversational Capacity and Health: Preparing State Policymakers for Adaptive Health Challenges.”



**Angie Snyder** (pictured), associate project director (Georgia Health Policy Center) and research assistant professor (Public Management and Policy), presented a poster titled “Constructing a Georgia Surveillance System for Hemoglobinopathies Using Multiple Data Sets: The First Step towards a Comprehensive Prevention and Service Delivery Strategy.” **Mei Zhou**, senior research associate (Georgia Health Policy Center) and **Jane Branscomb**, research associate II (Georgia Health Policy Center) assisted in creating the poster.



**Karen Minyard**, **Mary Ann Phillips** (pictured), associate project director (Georgia Health Policy Center), **Rachel Ferencik** and Chris Soderquist (Pontifex Consulting) presented “Systems Thinking, Conversational Capacity and Health: Preparing State Policymakers for Adaptive Health Challenges.”

**Karen Minyard** presented the webinar “Leading through Health Reform: Public Health’s Opportunity for Change” to the Association of State and Territorial Health Officials (ASTHO) on June 27, 2012.

**Erdal Tekin**, professor (Economics), presented “Is the Foreclosure Crisis Making Us Sick?” with Janet Currie (Princeton University and NBER) at the European Society of Population Economics Meetings in Bern, Switzerland, June 2012.



**Karen Minyard** presented “Systems Thinking in the Legislative Health Policy Arena” at the National Institutes of Health’s Society for Prevention Research Pre-conference Workshop on May 29, 2012, in Washington, DC.

## Media Hits



The recent study by **Erdal Tekin**, professor (Economics) and **Chandler McClellan** (pictured), Ph.D. student, (Economics) entitled “Stand Your Ground Laws and Homicides” was profiled by the *Freakonomics Blog*:

<http://www.freakonomics.com/2012/06/29/standing-your-ground/>. A copy of the paper has been released by the National Bureau of Economic Research (NBER) <http://www.nber.org/papers/w18187.pdf>.

**Erdal Tekin** was also interviewed by *Fuji TV* of Japan for the study.



**Elizabeth Fuller** (pictured), senior research associate (Georgia Health Policy Center), and **Jane Branscomb**, research associate II (Georgia Health Policy Center) were featured on *NBC 11Alive*’s “Help Desk: Answering your Health Care Concerns” on June 28, 2012.

**Karen Minyard**, executive director (Georgia Health Policy Center), associate research professor (Public Management and Policy), was interviewed on *NBC 11Alive* regarding the U.S. Supreme Court Ruling on the Affordable Care Act on June 28, 2012.

**Karen Minyard** was interviewed on *Healthcare Consumerism Radio* on Friday, June 29, 2012. Listen to the show online at:

<http://businessradiox.com/podcasts/HCCRadio/HCC20120629.mp3>.



**Volkan Topalli**, associate professor (Criminal Justice and Criminology) was interviewed for a special report in the *Kansas City Star* on the growing reluctance of victims to cooperate with law enforcement and the ensuing growth in unsolved violent crime cases in Kansas City.

<http://www.kansascity.com/2012/06/02/3639299/special-report-many-bullets-little.html>.



An August 8, 2012 *Forbes* article, refers to the 2003 Southern Economic Journal article (<http://www.jstor.org/stable/1061702>) by **Julie Hotchkiss**, adjunct professor (Economics), research economist and policy advisor (Federal Reserve Bank of Atlanta), **Robert E. Moore**, associate dean (AYSPS), and **Stephanie M. Zobay**, alumnus (Ph.D. Economics '02) as the "gold standard paper on the Rol (return on investment) of Olympic host cities." Article can be found at: <http://www.forbes.com/sites/kenrapoza/2012/08/02/minding-the-gap-between-londons-olympic-economic-hype-and-reality/>.

## Activities and Outreach

**Robert E. Moore** served as a discussant, Session E5-Program Evaluation at the 11th Journees Louis-Andre Gerard-Varet Conference in Public Economics, Marseille, France June 18-20, 2012

**Dennis Young**, professor (Public Management and Policy), was a visiting faculty member at the IAE Paris Sorbonne Graduate Business School in June 2012.

**Dennis Young** served as a faculty member at the 3<sup>rd</sup> EMES International Ph.D. Summer School in Trento Italy, from July 4-9, 2012.

## Georgia Health Policy Center (GHPC) Welcomes New Staff



**Jimmy Dills** is a research associate II at the GHPC. Jimmy comes to the center from Metro Public Health Department in Nashville, where he was the health impact assessment coordinator, and the Centers for Disease Control and Prevention's Division of Nutrition, Physical Activity and Obesity. Jimmy holds a Master of Public Health and Bachelor of Science from Emory University and a Master in Urban Planning from the University of Louisville.



**Cina Hartage** joined the GHPC as an administrative assistant in May. She provides administrative support for the Center of Excellence (COE) and assists the event planner in meeting and event logistics. Cina worked in several departments at Georgia State before joining COE.



**Libby Kauss** joined the GHPC as a research associate I in May. She works closely with the Center of Excellence and the Money Follows the Person program. Libby comes to AYSPS from the Georgia Governor's Office. She holds an M.S.W. from Georgia State University's Andrew Young School.

The *Dean's E-News* is a feature published by the AYSPS Dean's Office.  
For publication in the next issue, please submit your news items by Thursday at 5:15 p.m.  
to **Gayon McFarquhar-Johnson** at [prcgmjx@langate.gsu.edu](mailto:prcgmjx@langate.gsu.edu).

## ExCEN and CEAR Organize International Conference

The Experimental Economics Center (ExCEN) and the Center for the Economic Analysis of Risk (CEAR) organized a prestigious biennial conference that attracted many of the shining stars of the international scientific community on the campus of Georgia State University, June 30-July 3.

Members of the Organizing Committee included **James C. Cox**, professor (Economics), director (Experimental Economics Center), and the Noah Langdale Jr. Chair in Economics/Georgia Research Alliance Eminent Scholar, **Vjollca Sadiraj**, assistant professor (Economics), Glenn W. Harrison, professor (Risk Management and Insurance, director (Center for the Economic Analysis of Risk) and the holder of the C.V. Starr Chair (J. Mac Robinson College of Business), and **Elisabet Rutstrom**, professor (Economics) and director (Dean's Behavioral Economics Lab – J. Mac Robinson College of Business).

Known as FUR XV: International Conference on Foundations and Applications of Utility, Risk and Decision Theory, the event brought together a worldwide network of distinguished researchers in economics, psychology, statistics, cognitive science, computer science and several disciplines from business such as marketing, decision science, risk management and insurance to present research and share ideas.

### FUR XV International Conference

Foundations and Applications of Utility, Risk and Decision Theory (FUR)

June 30 - July 3 2012

Georgia State University, USA



#### Plenary Speakers

Jerome Busemeyer, Indiana University  
 Edi Karni, Johns Hopkins University  
 Harris Schlesinger, University of Alabama  
 Nathaniel T. Wilcox, Chapman University

Hosted By Experimental Economics Center (ExCEN)  
 and Center for the Economic Analysis of Risk (CEAR)

## Maymester Study Abroad in South Africa Program

The AYSPS Maymester Study Abroad in South Africa Program enjoyed its ninth run this year with 12 students from GSU and Morehouse College. The program enjoyed several firsts this year, including course credit for participating, and University of Pretoria presentations made by veterans of AYSPS programs: alumna **Nara Monkam** (Ph.D. in Economics '08) and **Jacques Kibambe Ngoie** (transient graduate student in Public Management and Policy '04).



Pictured at the Cape of Good Hope are, from left, DeShaun Bennett, Shayna Barley, Eric Bell, Nicole Houston, Tiffany Simmons, Candace Willis, Tiffany Munoz, Michael Yanosy, **Glenwood Ross**, clinical associate professor (Economics and faculty director of Study Abroad in South Africa Program), Cecelia Vaughn, Sarah Brechin, Marnell Saunders and Coni Thomas.

## Awards



**Roy Bahl**, founding dean emeritus (AYSPS), has been awarded the 2012 S. Kenneth Howard Award from the Association for Budgeting and Financial Management (ABFM) for recognition as a distinguished practitioner in the field of public budgeting and financial management for lifetime achievement. He will be recognized at the October annual conference. He received ABFM's Aaron Wildavsky Award for lifetime achievement in 1997, making him the only recipient of both major awards.





The National Tax Association recently named **David Sjoquist**, professor (Economics), director (Domestic Programs), and the Dan E. Sweat Distinguished Chair in Educational and Community Policy, the 2012 recipient of the Steven D. Gold Award. The award honors professionals who have made significant contributions to state and local fiscal policy and whose work reflects Gold's ability to span the interests of scholars, practitioners, policymakers and advocates with integrity and evenhandedness.

## Publications



**James Marton**, associate professor (Economics), "Retiree Health Benefits as Deferred Compensation: Evidence from the Health and Retirement Study," coauthored with Steve Woodbury (Michigan State University), *Public Finance Review*, forthcoming. Article can be found at:

<http://pfr.sagepub.com/content/early/2012/06/26/1091142112449375>.



**James C. Cox** (pictured), professor (Economics), director (Experimental Economics Center), and the Noah Langdale Jr. Chair in Economics/Georgia Research Alliance Eminent Scholar, and **Vjollca Sadiraj**, assistant professor (Economics), "Is There A Plausible Theory for Decision under Risk? A Dual Calibration Critique," co-authored with Bodo Vogt (University of Magdeburg, Germany) and Utteeyo Dasgupta (Franklin and Marshall College), *Economic Theory*, August 2012. Article can be found at:

<http://link.springer.com/article/10.1007%2Fs00199-012-0712-4>.



**James C. Cox**, **Vjollca Sadiraj** (pictured), and **Kurt Schnier**, associate professor (Economics), "Risk Factors for 30-Day Hospital Readmission among General Surgery Patients," co-authored with Michael T. Kassin, Rachel M. Owen, Sebastian Perez and John F. Sweeney (Emory University School of Medicine), *Journal of the American College of Surgeons*, forthcoming.



**James C. Cox**, **Vjollca Sadiraj** and **Kurt Schnier** (pictured), "Transplantation at the Nexus of Behavioral Economics and Healthcare Delivery," co-authored with Nicole Turgeon, Colleen McIntyre and Ravi Ruhil (Emory University Medical School), *The American Journal of Transplantation*, forthcoming.





**Volkan Topalli**, associate professor (Criminal Justice and Criminology), "With God on My Side: The Paradoxical Relationship Between Religious Belief and Criminality Among Hardcore Street Offenders," coauthored with **Timothy Brezina**, (pictured) associate professor, (Criminal Justice and Criminology) and **Mindy Bernhardt**, Ph.D. student (Criminal Justice and Criminology), *Theoretical Criminology*, forthcoming.



**Robin Hartinger-Saunders**, assistant professor (School of Social Work), C.M. Rine, (Plymouth State University), & T. Nochajski, (University of Buffalo), W. Wiecek, (Buffalo State College), "Neighborhood crime and perception of safety as predictors of victimization and offending among youth: A call for macro-level prevention and intervention models," *Children and Youth Services Review* 34, pp. 1966-1973 (2012).

## Presentations



**Volkan Topalli**, associate professor (Criminal Justice and Criminology), presented "Emotions and the Dynamic Foreground of Predatory Street Crime: Desperation, Anger, & Fear" at the Netherlands Institute for the Study of Crime and Law Enforcement, Amsterdam, The Netherlands, May 29, 2012.

C.M. Rine, (Plymouth State University) and **Robin Hartinger-Saunders**, assistant professor (School of Social Work), presented "An Integrated Approach to the Transfer of Learning in Child Welfare Curricula" at the Title IV-E National Roundtable Conference, Galveston, TX, May 31, 2012.

**Robin Hartinger-Saunders** presented "The Exploration of Individual, Family, and Neighborhood Predictors of Victimization and Offending Among Youth: Rethinking Prevention and Interventions Models" at the International Family Violence and Child Victimization Research Conference, Durham, NH, July 9, 2012.

## Activities and Outreach



**Volkan Topalli**, associate professor (Criminal Justice and Criminology), and **Wendy P. Guastaferrro** (pictured), assistant professor (Criminal Justice and Criminology), were selected to participate in the Center for Teaching and Learning's Digital Champion program at Georgia State University, August 1-3, 2012.

**Volkan Topalli** was appointed associate editor of the Oxford University Press' *Bibliographies in Criminology* for a three-year term starting Summer 2012.

The *Dean's E-News* is a feature published by the AYSPS Dean's Office.  
For publication in the next issue, please submit your news items by Thursday at 5:15 p.m. to  
**Gayon McFarquhar-Johnson** at [prcgmix@langate.gsu.edu](mailto:prcgmix@langate.gsu.edu).

## From the Dean



I know that you all have heard some of the discussions about the budget cuts that GSU and other units of the USG are taking this fiscal year. GSU is taking an overall cut of 3% of its state allocation; the AYS portion of that cut is 2.1% of our hard money budget, or about \$335,000. Vice-president of Finance Jerry Rackliffe gave a useful presentation and overview of the GSU budget last

week; the slides from the presentation will be posted, but I have not found them yet. And while no budget reduction is fun, there are some further issues that make this difficult to manage. First, we cannot make cuts that reduce our teaching capacity. Second, this is a permanent cut, so that our base will be permanently reduced. And finally, the Board of Regents is likely to make future budget allocations based on strategic initiatives, as opposed to more general increases, so that recovering our losses will be difficult. I hate to even think of it, but we were warned that further cuts might be coming.

One strategy for the future that we should consider is whether there are specialized courses or academic programs that we could offer in an online or hybrid format. Revenues generated from these endeavors will come back to the college, although the exact business plan here has not yet been determined. It is certainly possible that the upfront development costs could pay off, though.

We were asked to submit a list of proposed cuts, and we will hear soon whether these are acceptable. If you have suggestions regarding either cost reductions or specialized training or academic programs, please share them with me or with Associate Dean Bob Moore. We would be very interested in your thoughts.

## Grants



**Paul Ferraro**, professor (Economics), is a co-PI on a \$1.5 million grant project from Canada's International Development Research Centre entitled "Agua para consumo humano, comunidades y cambio climático: Impactos esperados y adaptación en América Central" and managed by the Centro Agronómico Tropical de Investigación y Enseñanza, Turrialba, Costa Rica. Paul Ferraro was a Fulbright Scholar in Costa Rica last spring.

**Paul Ferraro** is a co-PI on a \$1.4 million grant from the National Science Foundation's Coupled Natural-Human Systems program entitled, "Enhancing resilience of coastal ecosystems and human communities to oceanographic variability: social and ecological feedbacks."



**Tim Sass**, professor (Economics), was awarded a \$430,000 grant from the U.S. Department of Education's Institute for Education Sciences to study the effects of state and local education policies. The grant to Georgia State is part of a \$10 million five-year award to fund the Center for the Analysis of Longitudinal Data in Education Research (CALDER), of which Dr. Sass is a member.

## Publications



**Bruce Kaufman**, professor (Economics), "Wage Theory, the Great Depression, and New Deal Labor Program: Were Government and Unions to Blame?" *Industrial and Labor Relations Review*, July 2012: 501-32.



Darryl Romanow (Robinson College of Business), Lars Mathiassen (Robinson College of Business), **Glenn Landers**, (pictured) associate project director, and **Chris Parker**, associate project director (Georgia Health Policy Center), "Development of IT-enabled Chronic Care Management for the Medically Underserved: A Contextualist Framework," *Journal of Information Technology Theory and Application*, 12(4): 27-50.



**James C. Cox**, professor (Economics), director (Experimental Economics Center), and the Noah Langdale Jr. Chair in Economics/Georgia Research Alliance Eminent Scholar, "Presidential Address: Private Goods, Public Goods, and Common Pools with *Homo Reciprocans*," *Southern Economic Journal*, July 2012, based the Presidential Address he delivered to the 81th Annual Meeting of the Southern Economic Association, Washington, D.C., November 20, 2011.

## Presentations



**Nancy Kropf**, professor and director (School of Social Work), presented, "Aging: What it is and How we get there," which featured the Atlanta Regional Geriatric Education Center Initiative between Emory (lead), GSU, Morehouse and the Atlanta Regional Commission to the Decatur Rotary Club on September 7, 2012.



**Karen Watkins**, clinical assistant professor (School of Social Work), presented “Evidence Based Psychosocial Treatment with Older Adults who have Diabetes,” at the Atlanta Regional Geriatric Education Center Initiative Continuing Education session on Older Adults with Diabetes, August 25, 2012.



**Paula Stephan**, professor (Economics), presented “The Impact of Federal R and D” at the Office of Management and Budget in Washington, D.C., September 5, 2012.

**Paula Stephan** was the keynote speaker at the Health Research Alliance's fall meeting, where she presented “How Economics Shapes Science”, in Bethesda, Md., September 6, 2012.



**Holly Avey**, associate project director (Georgia Health Policy Center), presented “Developing Healthy Communities” at the Association of Defense Communities Annual Conference in Monterey, CA, August 8, 2012.



**Michelle Marcus Rushing**, research associate II (Georgia Health Policy Center), and Carrie Hribar (National Association of Local Boards of Health), presented the workshop “Improving Public Health Governance through Health Impact Assessment” at the National Association of Local Boards of Health 20th Annual Conference in Atlanta, GA, August 8, 2012.



**Kristi Fuller**, research associate II (Georgia Health Policy Center), J.W. Wright (Georgia Division of Aging), and Cara Pellino (Northwest Georgia's Area Agency on Aging) gave the panel presentation “Are Money Follows the Person Participants Better Off? Three Perspectives,” at the Georgia Gerontology Society Annual Conference in St. Simons, GA, August 15, 2012.





**Elizabeth Fuller**, senior research associate (Georgia Health Policy Center), presented “Improving Methods in the Assessment Phase: Ideas for Defining and Measuring the Strength of Evidence” at the 12<sup>th</sup> HIA International Conference in Quebec, Canada, August 29, 2012.

**Paul Ferraro**, professor (Economics), was the keynote speaker at the Consultative Group on International Agricultural Research's ‘Science Week’ at the World Agroforestry Centre, Nairobi, Kenya, September, 4 2012.

### Media Hits

**Bruce Kaufman**, professor (Economics) was quoted in “Labor Day: Workers are insecure” in the *Atlanta Journal & Constitution*, September 3, 2012.

### Activities and Outreach

**Paul Ferraro**, professor (Economics), organized a symposium entitled “The Causal Effects and Mechanisms of Protected Areas on Poverty,” and presented “Casual Mechanisms of Protected Areas on Poverty” at the Society for Conservation Biology Meetings, Oakland, CA, 15-18 July.

### Student and Alumni



**Lewis Faulk** (pictured), alumnus (Ph.D. in Public Policy '11 and now an assistant professor at American University) was selected for the 2012 Gabriel G. Rudney Memorial Award for Outstanding Dissertation by the Association for Research on Nonprofit Organizations & Voluntary Action (ARNOVA). This award is given annually for a Ph.D. dissertation that “contributes to the advancement of theory, conceptualization, research, or practice in an area closely related to nonprofit organizations or voluntary action.” **Dennis R. Young**, professor (Public Management and Policy) chaired Faulk’s dissertation committee, which included **Shena Ashley** alumnus (Ph.D. in Public Policy '07 and now an assistant professor at Syracuse University), Jennifer Clark (Georgia Institute of Technology), **Gregory B. Lewis**, professor and chair (Public Management and Policy), and **Bruce Seaman**, associate professor (Economics).

## Public Management and Policy fellows write about their experiences



**A. Michelle Long**, graduate student (Public Management and Policy) was chosen as a fellow for the Georgia Senate Budget and Evaluation Office. She writes to the AYSPS: This fellowship will provide me the opportunity to explore the state budgeting process and to fully understand the wide range of programs the state funds.

I have always loved the budgeting process. A budget is a plan...a road map of the past, the present, and the future. A budget helps us determine our successes and future growth opportunities while allowing us to think creatively about potential solutions to problems that range from small to very complex.

I look forward to working with the Georgia Senate Budget and Evaluation Office and will embrace this learning opportunity as a means of growing myself both academically and professionally.

**Sarah Otto**, graduate student (Public Management and Policy), is pursuing a Masters in Public Policy with a concentration in Global Governance and Human Security. She writes: I am interested in the ways organizations collaborate to promote public good, specifically through the efforts of nonprofits, INGOs and government systems. Through the CARE Graduate Fellowship, I will be exploring advocacy issues within the Pathways to Empowerment program. The goal of this program is to increase poor women farmer's productivity and promote more equitable agriculture systems.

**Tricia Whitlock**, graduate student (Public Management and Policy), who is a St. Vincent de Paul Fellow. She was inspired by her previous work as a project coordinator at Alexander Haas, Tricia Whitlock joined St. Vincent de Paul of Atlanta to become involved in their mission of helping those in need find long-term solutions towards self-sufficiency. As a fellow, she is working with St. Vincent de Paul to build their major donor base while planning long-term donor cultivation strategies. Tricia is currently a MPA student and has also received her BA in Public Relations and Journalism, along with a minor in Marketing at GSU in 2010.

The *Dean's E-News* is a feature published by the AYSPS Dean's Office. For publication in the next issue, please submit your news items by Thursday at 5:15 p.m. to **Gayon McFarquhar-Johnson** at [prcgmix@langate.gsu.edu](mailto:prcgmix@langate.gsu.edu).

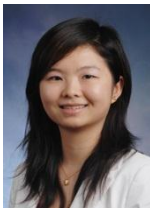
## Grants and Awards



**Erdal Tekin**, professor (Economics) and Janet Currie (Princeton University) were awarded a National Institutes of Health 21 grant in the amount of \$223,160 to study the impact of the foreclosure crisis on health.



**Erdal Tekin, Timothy Brezina** (pictured), associate professor (Criminal Justice and Criminology), and Gabriel Kuperminc (Psychology, GSU) were awarded a \$466,673 grant from the Office of Justice Programs of the U.S. Department of Justice. They will partner with the Big Brothers and Big Sisters of Metro Atlanta to conduct an assessment of the impact of an enhanced mentoring program using a randomized trial.



**Cathy Yang Liu**, assistant professor (Public Management and Policy), is co-PI on a \$50,000 grant from the Ewing Marion Kauffman Foundation for a joint project with researchers from the University of North Carolina Charlotte and the University of Southern California titled "Immigrant Entrepreneurship and Agglomeration in High-Tech Industries in the U.S."

## 2013 Economics of Risky Behaviors Conference Announcement

The 5<sup>th</sup> Annual Meeting on the Economics of Risky Behaviors organized by **Erdal Tekin**, professor (Economics), will be held between April 5-7, 2013 in Zurich, Switzerland. The conference is sponsored jointly by the Andrew Young School, IZA, Swiss Re, Center for the Economic Analysis of Risk (CEAR), and the Usery Workplace Research Group. The highlights of the 2013 meeting include a keynote lecture by professor [John Cawley](#) (Cornell University) and a special lecture by professor [Michael Eriksen](#), dean (Institute of Public Health at GSU) and former Director of the Office on Smoking and Health at the Centers for Disease Control and Prevention (CDC). The event will also be honored by the attendance of Dr. [Risa Palm](#), provost (Georgia State University), Dr. [Mary Beth Walker](#), dean and professor (Andrew Young School of Policy Studies), and professor [Klaus F. Zimmermann](#), IZA director and University of Bonn.

Call for papers for the conference can be found at:

[http://www.iza.org/conference\\_files/riskonomics2013/call\\_for\\_papers](http://www.iza.org/conference_files/riskonomics2013/call_for_papers)

## Publications

**Erdal Tekin**, professor (Economics), "The Psychological Costs of War: Military Combat and Mental Health," co-authored by alumnus **Resul Cesur** (Ph.D. Economics '09 and now an assistant professor at the University of Connecticut), Joseph Sabia (San Diego State University), *Journal of Health Economics*, forthcoming.



**Felix Rioja**, associate professor (Economics), "What is the Value of Infrastructure Maintenance: a Survey," forthcoming chapter in the Infrastructure and Land Policies edited by the Lincoln Institute of Land Policy. This paper was also presented at their annual conference June 2012 in Cambridge, Mass.



**Bruce Kaufman**, professor (Economics), "Some Coasean Problems with Posnerian Law and Economics," *Journal of Economic Issues* (September 2012), pp. 745-64.



**Julie Hotchkiss**, adjunct professor (Economics) and research economist and policy advisor (Federal Reserve Bank of Atlanta), "Does Employing Undocumented Workers Give Firms a Competitive Advantage?" with J. David Brown, Myriam Quispe-Agnoli, and Serife Genc (all with the Federal Reserve Bank of Atlanta), *Journal of Regional Science*, forthcoming

## Presentations



On September 20, **Ambassador Andrew Young**, Andrea Young, and **Harvey Newman** (pictured), professor (Public Management and Policy) made presentations as part of the Congressional Black Caucus Foundation's Annual Legislative Conference in Washington, D.C. Their topic was "Cities in the 21<sup>st</sup> Century: Lessons from the Making of Modern Atlanta." Their host for the event was the Honorable John Lewis. Other participants included Mayor Shirley Franklin, Mayor Marc Morial, Professor Ravi Perry, and Georgia Rep. Stacey Abrams, who served as moderator.



**Dennis Young**, professor (Public Management and Policy), was the opening plenary keynote speaker at the Researching the Voluntary Sector Conference, sponsored by the Voluntary Sector Studies Network and the National Council of Voluntary Organizations where he presented "A Benefits Approach to Financing Nonprofit Organizations," University of Birmingham, England, September 10 – 11, 2012.

**Dennis Young** was the keynote speaker at the 4<sup>th</sup> International Social Innovation Research Conference where he presented "The State of Theory and Research on Social Enterprise," Birmingham, England, September 12 -14, 2012.



**Fred Brooks**, associate professor (School of Social Work), presented "Analyzing ACORN through a Real Utopia Lens," at the American Sociological Association 107<sup>th</sup> Annual Meeting, Denver, CO, August 18, 2012.

**Fred Brooks** presented "Evaluation of the Homeless Veterans Child Support Project" at the Meeting of Fatherhood Agents from Georgia. Department of Child Support Services in Macon, GA, August 1, 2012.

## Media Hits



**Gregory B. Lewis**, chair and professor (Public Management and Policy) was quoted by Miranda S. Leitsinger on *NBC News* in "For 1st time, gay marriage may win statewide vote" (September 21, 2012). <http://usnews.nbcnews.com/news/2012/09/21/14011601-for-1st-time-gay-marriage-may-win-statewide-vote?lite>

## Activities and Outreach



**Jan Ligon** (center), associate professor (School of Social Work), was a plenary speaker on September 14 for an international family conference at West University in Timișoara, Romania. He is joined in the photos by Cosmin Goian (left), West University's Social Work Department chair, and Aledandru Neagoe, deputy dean, Faculty of Sociology and Psychology.

The *Dean's E-News* is a feature published by the AYSPS Dean's Office. For publication in the next issue, please submit your news items by Thursday at 5:15 p.m. to **Gayon McFarquhar-Johnson** at [prcgmjx@langate.gsu.edu](mailto:prcgmjx@langate.gsu.edu).



## Publications



**Jill Littrell**, associate professor (School of Social Work), “Controversies in psychiatry and the DSM-5: The relevance for social work,” co-authored by Jeffrey R. Lacasse (Arizona State University), *Families in Society*, forthcoming. Available on-line on October 15, 2012.



**Paula Stephan**, professor (Economics), “The Other 1 Percent,” *Scientific American*, October 2012, (307) 4, pps.

The **Georgia Health Policy Center** has released its new policy brief: “Health Insurance Exchanges.” It can be found online at:

<http://aysps.gsu.edu/sites/default/files/documents/ghpc/Health%20Insurance%20Exchanges%281%29.pdf>.

The **Georgia Health Policy Center** recently posted the report “Using a Health in All Policies Approach to Address Social Determinants of Sexually Transmitted Disease Inequities in the Context of Community Change and Redevelopment.” Download a copy at:

<http://aysps.gsu.edu/sites/default/files/documents/ghpc/HiAP%20Approach%20to%20Addressing%20STDs%20in%20the%20Context%20of%20Redevelopment%20Final%281%29.pdf>

## Presentations



**Debra Kibbe**, senior research associate (Georgia Health Policy Center), presented “Prevention of Pediatric Overweight: Population & Individual Approaches,” at the Academy of Nutrition and Dietetics Commission on Dietetic Registration Child and Adolescent Weight Management Certificate Program, Atlanta, GA, September 8, 2012.

**Debra Kibbe** presented “Don't Start from Scratch with Programming: A Review of Evidence-Based Nutrition, Physical Activity & Obesity Related Interventions,” at the Office of Rural Health Policy Delta States Rural Development Network Grantee Meeting, Chicago, IL, September 18-19, 2012.



**Tanisa Adimu**, senior research associate (Georgia Health Policy Center), presented “Policy Systems and Environmental Change,” at the Office of Rural Health Policy Delta States Rural Development Network Grantee Meeting, Chicago, IL, September 18-19, 2012.



**Amanda Phillips Martinez**, senior research associate (Georgia Health Policy Center), presented “Using a Needs Assessment and Data Drive to Program Development,” at the Office of Rural Health Policy Delta States Rural Development Network Grantee Meeting, Chicago, IL, September 18-19, 2012.



**Rachel Campos**, research associate II (Georgia Health Policy Center), presented “Identifying Evidence-based or Promising Practices to Inform Your Program Development,” at the Office of Rural Health Policy Delta States Rural Development Network Grantee Meeting, Chicago, IL, September 18-19, 2012.



**Beverly Tyler**, associate project director (Georgia Health Policy Center), presented “Developing a Logic Model” and “Defining Your Key Measures: Using Your Program Logic Model to Draft Your Evaluation Plan,” at the Office of Rural Health Policy Delta States Rural Development Network Grantee Meeting, Chicago, IL, September 18-19, 2012.

## Media Hits



**Bill Kahnweiler**, associate professor (Public Management and Policy), was quoted in an article, "Temporary Workers Reshaping Companies," that appeared in *NBIZ*, an e-zine covering contemporary management issues. Article can be found at: <http://nbizmag.com/magarticles/tempworkersreshapingcompanies.pdf>

## Activities and Outreach



**Bruce Kaufman**, professor (Economics), gave a talk on October 11, 2012 to the Mercer 'Seniors University' program on the topic, "America's Growing Income and Wealth Inequality: Causes and Consequences."



**John Clayton Thomas**, professor (Public Management and Policy), was appointed to the Editorial Board of *Public Administration Review*.



**Bart Hildreth**, professor (Public Management and Policy), was elected as a Fellow of the National Academy of Public Administration.

**Bill Kahnweiler**, associate professor (Public Management and Policy), participated in an extensive interview conducted by Ph.D. candidates in Human Resource Development at the University of Texas. The research was titled "Pressing Issues in Research and Practice of Organization Development: Perspectives from Prominent OD Scholars."

## New Staff



**Robyn Bussey** is a research associate II at the Georgia Health Policy Center. Robyn comes to the center from Platt Health Management Consulting, Inc., where she worked as a Senior Consultant on various health planning, research and regulatory projects. She received her bachelor's degree from Florida A&M and received her Master of Business Administration and Master of Health Administration from Georgia State University.



**Sacha Gayle** recently joined the staff at Georgia Health Policy Center as administrative assistant. Sacha supports the senior administrative coordinator by working closely with student assistants, assisting with meeting logistics and aiding with special projects. She also works with the assistant director of communications and marketing in coordinating conference materials and preparing marketing materials and presentation slides. She has experience in the fields of finance, facilities and property management. Sacha holds a Bachelor of Business Administration with a concentration in marketing from Georgia State University.



**Michelle Rushing** is a research associate II at the Georgia Health Policy Center. Michelle conducts Health Impact Assessment (HIA) projects, training and technical assistance. She also prepares research on links between the built environment and human health. Michelle has previous experience conducting HIAs, as well as leading HIA training sessions for the Georgia Department of Public Health, city and regional planners, and local public health districts. She has a Master of Public Health from the Institute of Public Health at Georgia State University and a bachelor's degree in anthropology from Cornell University.

The *Dean's E-News* is a feature published by the AYSPS Dean's Office. For publication in the next issue, please submit your news items by Thursday at 5:15 p.m. to **Gayon McFarquhar-Johnson** at [prcgmjx@langate.gsu.edu](mailto:prcgmjx@langate.gsu.edu).

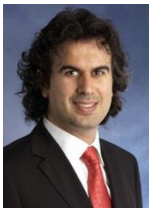


## Andrew Young School Faculty Receive Research Grants



**Wendy Guastaferro**, assistant professor (Criminal Justice and Criminology) and Daniel Whitaker of the Institute of Public Health and the Center for Healthy Development (CHD) are co-principal investigators on a \$4.8 million research project intended to better the lives of children and families of substance-abusing individuals who receive treatment through the DeKalb County Drug Court.

The U.S. Department of Health and Human Services' Administration for Children and Families funded \$3.9 million with matching funds from research partners Georgia State University, the DeKalb County Superior Court Drug Court, the Lutheran Services of Georgia and the Georgia Center on Child Advocacy. Additional collaborators will include the Georgia Department of Family and Children's Services, the Georgia Department of Behavioral Health and Developmental Disabilities and the DeKalb County Community Service Board.



**Erdal Tekin**, professor (Economics) was awarded a two-year research grant of 623,731 DKK, equivalent to \$108,427, 2012-2014, from the Danish Council for Independent Research on a project titled "*Ramadan Exposure in Utero and Health and Socio-economic Outcomes of Muslim Immigrants in Denmark: An Analysis of Fetal Origins Hypothesis*" with Marie Louise Schultz-Nielsen and Jane Greve (both at the Rockwool Foundation Research Unit in Denmark).

## AYSPS Hosts KEI Event



Economic Institute (KEI) had a university-wide event, **U.S. Foreign Policy Towards Asia in a Time of Transition**, on October 15 and 16, 2012, coordinated by **Grace O**, clinical assistant professor (Economics). On the first day a record 80 students participated in a Six Party Talk Simulation where students represent delegates from the U.S., South Korea, North Korea, Japan, China and Russia who worked on solving challenges in the region. On the

second day, three panel speakers – Abraham M. Denmark from the National Bureau of Asian Research, Anthony Kim from Heritage Foundation and Nicholas Hemisevicz from the Korea Economic Institute – talked about U.S. foreign policy, and how to build careers.

## Presentations



**Ambassador Andrew Young** (Advisory Board Member), **Andrea Young** (Advisory Board Member), and **Harvey Newman** (pictured), professor (Public Management and Policy) made a presentation on “The Making of Modern Atlanta” to the National Urban League Fellows meeting in Atlanta, October 11, 2012.



**John Clayton Thomas**, professor (Public Management and Policy), delivered two invited presentations on “Citizen, Customer, Partner: Re-Thinking the Relationship Between the Public and Public Management” at the City University of Hong Kong, October 10, and at The 5th International Conference on Public Management in the 21st Century: Opportunities and Challenges in Macau, October 12, 2012.



**Terri Lewinson** (pictured), assistant professor (School of Social Work), presented “Supporting Undergraduate Research through University/ Community Partnership” with her mentee, **Jamie Redding**, undergraduate student (Social Work), at the National Association of Social Work Annual Conference in Atlanta on October 13, 2012.



**Nancy P. Kropf**, professor and director (School of Social Work) presented “Reminiscence: An Evidence Based Intervention for Older Adults” with Dawn Aycock (Byrdine F. Lewis School of Nursing & Health Professions) at the National Association of Social Workers Georgia conference on October 12, 2012.

**Erdal Tekin**, professor (Economics), presented “Stand Your Ground Laws and Homicides” co-authored with **Chandler McClellan**, Ph.D. student (Economics) at the Economics of Crime Workshop organized by the School of Economics at Erasmus University, The Netherlands, October 6, 2012.

## Media Hits



**Bill Waugh**, professor (Public Management and Policy), was interviewed by *The Weather Channel* on the likely impact of the presidential election on alternative energy and climate change adaptation programs.



**Gregory B. Lewis**, department chair and professor (Public Management and Policy), was cited by Paul Demko in "Marriage polls have infidelity problem," *Politics in Minnesota*, October 12, 2012). <http://politicsinminnesota.com/2012/10/marriage-polls-have-infidelity-problem/>

## Activities and Outreach

**Bill Waugh**, professor (Public Management and Policy), served on FEMA's Emergency Management Research Guidebook work group to help develop a guidebook for emergency management students and scholars. The task group met at the National Emergency Training Center under the auspices of the Emergency Management Institute, FEMA's training arm.



**Volkan Topalli**, associate professor (Criminal Justice & Criminology) gave an invited address to the U.S. Anti-Doping Agency (USADA) at their annual research conference in Atlanta on October 13th. The event was co-sponsored by the World Anti-Doping Agency (WADA) and the U.S. Olympic Committee (USOC). The title of his talk was "Deterring the Athletes from Doping: A Criminological Perspective on Risk-Sensitivity, Deterrability, and Informal Sanctions".

## Welcome

**Alicia Brady**, Director of Development (AYSPS), and her husband Justin Brady welcomed a little girl Tessa Jane Brady, who was born at 8:32 pm on October 20, 2012 weighing in at a whopping 9lbs 2 oz.



The *Dean's E-News* is a feature published by the AYSPS Dean's Office. For publication in the next issue, please submit your news items by Thursday at 5:15 p.m. to **Gayon McFarquhar-Johnson** at [prcgmjx@gsu.edu](mailto:prcgmjx@gsu.edu).

## Publications



Z. Yin, D. Parra-Medina, A. Cordova, M. He, V. Trummer, E. Sosa, KJ. Gallion, A. Sintes-Yallen, Y. Huang, X. Wu, D. Acosta, **Debra Kibbe** (pictured), senior research associate (Georgia Health Policy Center), and Amelie Ramirez. (2012). "Míranos! Look at Us, We Are Healthy! An Environmental Approach to Early Childhood Obesity Prevention," *Childhood Obesity*. 8(5): 429-439.

## Presentations



**Glenn Landers**, associate project director (Georgia Health Policy Center), presented "On the effects of aging dual eligibles Medicaid and Medicare senior issues, the federal budget, and health care issues," at the 2012 Senate Aging Study Committee, Atlanta, GA, October 23, 2012.



**Brian Payne** (pictured), chair and professor (Criminal Justice and Criminology) and **Christina Policastro**, Ph.D. student (Criminal Justice and Criminology), presented "An Examination of Deviance and Deviants in the Durable Medical Equipment (DME) Field: Characteristics, Consequences, and Responses to Fraud" at the Southern Criminal Justice Association, Atlantic Beach, FL, September 26, 2012.

## Media Hits



**Gregory B. Lewis**, professor and chair (Public Management and Policy), was cited in Jonathan Capehart's article, "Silence is Golden on Gay Issues," *Washington Post*, October 22, 2012. [http://www.washingtonpost.com/blogs/post-partisan/post/silence-is-golden-on-gay-issues/2012/10/21/60427dea-1baa-11e2-ba31-3083ca97c314\\_blog.html](http://www.washingtonpost.com/blogs/post-partisan/post/silence-is-golden-on-gay-issues/2012/10/21/60427dea-1baa-11e2-ba31-3083ca97c314_blog.html)





**Spencer Banzhaf**, associate professor (Economics), had an Op Ed piece "Daylight-Savings Time Is Past Its Prime," in the *Wall Street Journal*, November 2, 2012.

<http://online.wsj.com/article/SB10000872396390443749204578052962065551312.html?KEYWORDS=banzhaf>.

## Awards and Honors



**Felix Rioja**, associate professor (Economics) was appointed to the editorial board of the *Journal of Financial Economic Policy*.

## New Staff Joins Georgia Health Policy Center



**David Bolt** is a Research Associate I at the Georgia Health Policy Center and a part of the Center of Excellence in Child and Adolescent Behavioral Health (COE) team. He comes to the center from the Multiagency Alliance for Children (MAAC) where he worked as a care coordinator. David is currently training to be a Georgia Certified Master Wraparound Trainer/Coach and is participating in a variety of fidelity monitoring activities for the Georgia Child and Adolescent Behavioral Health System of Care. He holds a Master of Social Work with a concentration in community partnerships from GSU and a Bachelor of Social Work with a minor in Sociology from UGA.



**Cynthia Williams** recently joined the Georgia Center of Excellence in Child and Adolescent Behavioral Health (COE) team at the Georgia Health Policy Center as a Research Associate II. Cynthia's work will focus on data analysis, data driven quality improvement methods, and report writing. She comes to the COE from the Public Citizen's Health Research Group where she served as the Managing Editor. Cynthia holds a Master of Public Administration with a concentration in Program Evaluation and Policy Analysis from GSU and a Bachelor of Arts in English from Loyola University in New Orleans.



**Daniela Zapata** started working as a Research Associate II at the Georgia Health Policy Center in October. Daniela will be spending 60% of her postdoctoral research time as member of the Georgia Center of Excellence in Child and Adolescent Behavioral Health (COE) team; the remainder of her time will be in the Economics department. Her work for the COE will focus on data analysis for children and adults with behavioral health needs and supporting the development of data-based quality improvement processes. Daniela has a Ph.D. in Economics from the University of North Carolina at Greensboro (UNCG) and a Masters in Economics from Universidad de Chile and UNCG.

The *Dean's E-News* is a feature published by the AYSPS Dean's Office.  
For publication in the next issue, please submit your news items by Thursday at 5:15 p.m. to  
**Gayon McFarquhar-Johnson** at [gayon@gsu.edu](mailto:gayon@gsu.edu)

## From the Dean



Please let the dean's office know if you are hosting an elected official or the director of a state office (for example: the Director of the Division of Community Health) as a speaker or a panelist. I would like to greet these folks if possible. Similarly, the Office of Government and Community Affairs (<http://www.gsu.edu/govaffairs/>) wants to know when these visitors are on campus, so that they have the opportunity of saying hello.

## AYSPS Dissertation Fellowship Announcement



The Andrew Young School of Policy Studies has established a new dissertation fellowship. The purpose of this program is to support doctoral students who are at dissertation stage and will need supplemental funding to complete their dissertation

research. This funding is not intended to replace a GRA or GTA assignment, but rather to be supplemental to it. This award does not include a tuition waiver. The doctoral student must continue his/her GRA or GTA assignment to receive a tuition waiver.

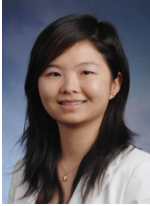
Approved AYS dissertation fellows will receive a \$2,000 supplemental fellowship stipend for one year and reimbursement for expenses to cover research costs (experiment costs, data collection, travel, etc.).

Doctoral students become eligible to apply for this support after successfully defending their dissertation proposals. To apply for this support the student should submit a 1-2 page summary of his/her approved proposal, a letter of support from his/her dissertation chair, and a budget request (with appropriate supporting documentation) to his/her department's doctoral director. The budget request should clearly state how the requested funds would be used. The doctoral director may request clarification or require additional supporting materials. Fellowships will be competitively awarded based on the feasibility of the project, innovation/originality, and the potential scholarly contribution of the dissertation. The doctoral director will recommend full, partial, or no funding to the AYS Dean's office. Final approval and funding level rests with the Dean's Office.

There will be three submission deadlines each year: Apr. 15<sup>th</sup>, July 30<sup>th</sup>, and Dec. 15<sup>th</sup>. The first submission deadline is Dec. 15, 2012.

Students approved to receive the fellowship will have the stipend added to their GRA/GTA pay and their department will be provided the funds for reimbursement of approved expenses. These reimbursable accounts will be administered by their academic department business manager.

## Awards & Grants



**Cathy Yang Liu**, assistant professor (Public Management and Policy), was awarded an Early Career Research Grant by the Regional Studies Association in the amount of £10,000, equivalent to around \$16,000, for 2013. The title of her project is "The Geographic Location and Mobility of Immigrant Entrepreneurs in the US".

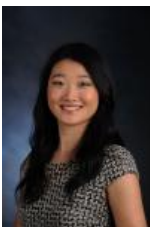
## Publications



**Robin Hartinger-Saunders**, assistant professor (Social Work), Christine M. Rine (Plymouth State University), William Wieczorek (Buffalo State College), and Thomas Nochajski (University of Buffalo), "Family level predictors of victimization and offending among young men: Rethinking the role of parents in prevention and intervention models," *Children and Youth Services Review* 34, 2423–32 (2012). <http://dx.doi.org/10.1016/j.childyouth.2012.08.017>



**James C. Cox**, professor (Economics), director (Experimental Economics Center), and the Noah Langdale Jr. Chair in Economics/Georgia Research Alliance Eminent Scholar, **Vjollca Sadiraj**, assistant professor (Economics), and **Kurt E. Schnier**, associate professor (Economics), "Risk Factors for 30-Day Hospital Readmission among General Surgery Patients," *Journal of the American College of Surgeons*, 215(3), 322-30 (2012). Co-authors are Michael T. Kassin, Rachel M. Owen, Sebastian Perez, and John F. Sweeney (all with Emory University School of Medicine).



**Jim Cox** and **Danyang Li** (pictured), Ph.D. student (Economics), "Do I Care if You Know I Betrayed You?" *Economics Bulletin*, 32(4), 2839-48 (2012).



**Vjollca Sadiraj**, assistant professor (Economics), and **Juan Sun**, PhD. Student (Economics), "Efficiency in Alternating Offers Negotiations over Gains and Losses," *Economics Bulletin*, 32(4), 2366-74 (2012).

## Presentations

**Vjollca Sadiraj**, assistant professor (Economics), presented "Paradoxes and Mechanisms for Choice under Risk" at the 74<sup>th</sup> International Atlantic Economic Conference, Montreal, PQ, October 4-7 2012.



**Debra Kibbe**, senior research associate (Georgia Health Policy Center), along with Donna Decaille (Georgia Department of Public Health), presented "Establishing a Food Policy Council: Lessons Learned from Georgia" at the Southern Obesity Summit, Charlotte, NC, October 15, 2012.

**Debra Kibbe** along with Evelyn Johnson (American Academy of Pediatrics), presented "Educating Physicians in their Communities (EPIC): A Replicable Obesity Management Model for Health Care Professionals," at the Southern Obesity Summit, Charlotte, NC, October 15, 2012.



**Susan McLaren**, research associate II (Georgia Health Policy Center), presented the poster "Medical Legal Partnerships: How Evaluation Makes the Case for Collaboration," at the American Evaluation Association's Annual Conference, Minneapolis, MN, October 24-25, 2012.



**Angela Snyder**, research assistant professor (Public Management and Policy), presented the poster "A Mixed Methods Assessment of Medicaid Eligibility System Redesign in Georgia," at the American Evaluation Association's Annual Conference, Minneapolis, MN, October 24-25, 2012.





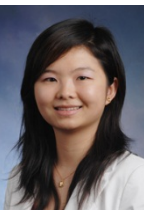
**Kristi Fuller**, research associate II (Georgia Health Policy Center) and **Glenn Landers**, associate project director (Georgia Health Policy Center), participated in the roundtable presentation, "Ensuring Utility in Evaluation: Stakeholders, Relevance and Meaningful Outputs in the Money Follows the Person Program Evaluation," at the American Evaluation Association's Annual Conference, Minneapolis, MN, October 24-25, 2012.



**Glenn Landers** presented "Are Money Follows the Person Program Participants Better off? A Pre- Post-Analysis of Quality of Life" at the American Public Health Association's Annual Meeting, San Francisco, CA, October 27, 2012.



**Jimmy Dills**, research associate II (Georgia Health Policy Center), presented "Public Health Institutes: Building National Capacity for Health Impact Assessment," at the American Public Health Association's Annual Meeting, San Francisco, CA, October 27, 2012.



**Cathy Yang Liu**, assistant professor (Public Management and Policy), presented "From cities to suburbs: The intrametropolitan location and growth of ethnic enterprises," coauthored with alumnus **Samir Abdullahi** (M.P.P. '10 and now at the Gwinnett Chamber of Commerce) at the Race, Ethnicity, and Place VI conference, San Juan, Puerto Rico, October 26, 2012.



**Paula Stephan**, professor (Economics), presented "The Coming of the Foreign Born for Ph.D. and Postdoctoral Study: A Sixteen Country Perspective," at the workshop on High Skill Immigration at the National Bureau of Economic Research Cambridge, MA, October 25, 2012.

**Paula Stephan** presented "Reaping what Bush Sowed: The Endless Frontier and How It Transformed the Research Enterprise," at The Changing Frontier: Rethinking Science and Innovation Policy Pre-Conference, National Bureau of Economic Research Cambridge, MA, October 26, 2012.

## Media Hits

**Paula Stephan**, professor (Economics), had her research on international mobility featured in *Corriere della Sera* (the newspaper with the largest circulation in Italy), November 4, 2012.

**Paula Stephan** was quoted in the *Science Careers* article "A Modest Workforce Proposal," November 2, 2012.

[http://sciencecareers.sciencemag.org/career\\_magazine/previous\\_issues/articles/2012\\_11\\_02/caredit.a1200121](http://sciencecareers.sciencemag.org/career_magazine/previous_issues/articles/2012_11_02/caredit.a1200121)

**Paula Stephan** was quoted in the article, "Global Mobility: Science on the Move," that appeared in *Nature* on October 17 and featured the GlobSci survey that Stephan and colleagues Chiara Franzoni and Giuseppe Scellato conducted. <http://www.nature.com/news/global-mobility-science-on-the-move-1.11602>

## Outreach

**Robert Friedmann**, professor emeritus (Criminal Justice and Criminology) and director, (Georgia International Law Enforcement Exchange), was invited to participate in "Seminar 15" of the U.S. Army War College's four-day Commandant's National Security Program for 355 high-ranking officers in Camp Hill, PA, in July. Friedmann is pictured below, front row, third from the left.

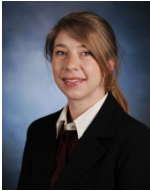


The **Georgia International Law Enforcement Exchange (GILEE)** assisted the London Metropolitan Police (MET) in planning and executing security for the 2012 Summer Olympic Games by sharing the experience and knowledge acquired in Atlanta before, during and after its 1996 Centennial Olympic Games. Prior to the London Games, GILEE members from the National Guard, Fulton County Police, Covington Police, Atlanta Police, Georgia Bureau of Investigation, Georgia Public Safety Training Center, Rockdale Police and the FBI consulted with delegations from the MET police in London and Georgia.

More than 200 security personnel attended the fourth annual Business Continuity Summit held September 27 at the Home Depot headquarters in Atlanta. Co-sponsored by the Greater Atlanta Chapter of ASIS International, the Building Owners and Managers Association, **GILEE**, the United States Secret Service - Atlanta Field Office and the U.S. Attorney's Office - Northern District of Georgia, in partnership with The Home Depot, the summit informs corporate security, corporate counsels, law enforcement, homeland security and public safety officials.

The *Dean's E-News* is a feature published by the AYSPS Dean's Office.  
For publication in the next issue, please submit your news items by Thursday at 5:15 p.m. to  
**Gayon McFarquhar-Johnson** at [gayon@gsu.edu](mailto:gayon@gsu.edu)

## Awards



**Carlianne Patrick**, assistant professor (Economics), was awarded the 2012 Regional Science Association International's prize for best dissertation in regional science for "Essays in Economic Growth and Development Policy." Information about the award can be found at: <http://www.rsai.org/>.



**Lewis Faulk**, alum (Ph.D. in Public Policy '11 and now an assistant professor at American University), was honored with ARNOVA's Gabriel Rudy Award for Best Dissertation for his thesis, "Nonprofit and Foundation Behavior in Competitive Markets for Grants." The criteria for submission of dissertations are those that contribute to the advancement of theory, conceptualization, research or practice in an area closely related to nonprofit organizations or voluntary action.

## Publications



**Mindy R. Wertheimer**, clinical professor (School of Social Work) The Board Chair Handbook, 3<sup>rd</sup> edition (2013). Washington DC: BoardSource.



**Jimmy Dills**, research associate II (Georgia Health Policy Center), "Objectively Measuring Route-to-Park Walkability in Atlanta, Georgia," *Environment and Behavior*, Volume 44, Issue 6 (Nov. 2012). The article is available online at: <http://eab.sagepub.com/content/early/2011/05/06/0013916511404409.abstract>



**David L. Sjoquist**, professor (Economics) and the Dan E. Sweat Distinguished Chair in Educational and Community Policy, wrote the preface for A Primer on Property Tax: Administration and Policy, edited by William McClusky, Gary Cornia, and Lawrence Walters and published by Wiley-Blackwell.

## Presentations



**Erdal Tekin**, professor (Economics), gave the keynote speech, "Efficiency and Equity Challenges in Public Child Care Provision," at the Inter-American Conference on Social Security organized by World Bank and the Universidad IberoAmericana in Mexico City, Mexico, November 16, 2012.



**Sally Wallace**, chair and professor (Economics) and director (Fiscal Research Center), presented "Parental Incarceration and Child Food Security" at the University of Venice, Ca'Foscari, Venice, Italy, November 19, 2012.



**Dennis Young** (pictured), professor (Public Management and Policy) and director (Nonprofit Studies Program) and **Jesse Lecy**, assistant professor (Public Management and Policy), presented their paper "Defining the Universe of Social Enterprise: Competing Metaphors" to the NYU-Stern Conference on Social Entrepreneurship, New York NY, November 7-9, 2012.

**Carlianne Patrick**, assistant professor (Economics) presented "What do Million Dollar Facilities Really Do?" at the 2012 annual meetings of the North American Regional Science Association, Ottawa, Ont., November 7-10, 2012.

**David L. Sjoquist**, professor (Economics) and the Dan E. Sweat Distinguished Chair in Educational and Community Policy, presented "The Effect of Insurance Premium Taxes on Interstate Differences in the Size of the Property-Casualty Insurance Industry" at a seminar at the School of Public and Environmental Affairs, University of Indiana-Bloomington, Bloomington, IN, October 6, 2012.



## Media Hits



**Holly Avey**, associate project director (Georgia Health Policy Center), was quoted in the article “Policymakers consider more attention to health impact” in the Columbia Daily Tribune on October 25, 2012. Article can be found at the following website: <http://www.columbiatribune.com/news/2012/oct/25/policymakers-consider-more-attention-to-health>.



**Karen Minyard**, associate research professor (Public Management and Policy) and executive director (Georgia Health Policy Center), was quoted in the Georgia Health News article “Health policy now where the action is” on November 14, 2012. Article can be found at: <http://www.georgiahealthnews.com/2012/11/health-policy-action>.

**David L. Sjoquist**, professor (Economics) and the Dan E. Sweat Distinguished Chair in Educational and Community Policy, was quoted in several recent articles:

- in the “Fiscal cliff will tie Obama’s hands” in the November 9-15, 2012 issue of the *Atlanta Business Chronicle*. Article can be found at: <http://www.bizjournals.com/atlanta/print-edition/2012/11/09/fiscal-cliff-will-tie-obamas-hands.html>.
- in the “Georgia charter amendment facts differ from campaign rhetoric” in the October 20, 2012 issue of the *Rome News-Tribune*. Article can be found at: [http://romenews-tribune.com/view/full\\_story/20551523/article-Georgia-charter-amendment-facts-differ-from-campaign-rhetoric?instance=article\\_results](http://romenews-tribune.com/view/full_story/20551523/article-Georgia-charter-amendment-facts-differ-from-campaign-rhetoric?instance=article_results).
- on Indiana’s gubernatorial candidates’ proposed tax policies in the October 6 issue of the *Indianapolis Business Journal*.

**David L. Sjoquist**, was also interviewed on October 23 by the *New York Times* for background material for an article on the Georgia Constitutional amendment on charter schools that ran on November 5, 2012.



**Volkan Topalli**, associate professor (Criminal Justice and Criminology Faculty) was interviewed for an *Atlanta Journal Constitution* story regarding the national drop in crime. Article can be found at: <http://www.ajc.com/news/news/local/crime-falls-despite-hard-economic-times/nSw5k/>.

**Robert Friedmann**, professor emeritus (Criminal Justice and Criminology) and director (Georgia International Law Enforcement Exchange), was quoted in the *Atlanta Journal-Constitution* stories "Going deeper on crime stats," on November 8, 2012; "Crime still falling in Atlanta," October 30, 2012 (<http://www.ajc.com/news/news/local/crimes-still-falling-in-metro-atlanta-us/nSr4j/>); and "Crime falls despite hard economic times" (<http://www.ajc.com/news/news/local/crime-falls-despite-hard-economic-times/nSw5k/>), on November 4, 2012.

## Outreach



**Sally Wallace**, chair and professor (Economics) and director (Fiscal Research Center), and **Susan Laury**, (pictured) associate professor (Economics), traveled to Venice to conduct tax compliance experiments with Michele Bernasconi of the University of Venice Ca'Foscari.

**Robert Friedmann**, professor emeritus (Criminal Justice and Criminology) and director (Georgia International Law Enforcement Exchange), chaired the session on The Challenges of Illegal Immigration for Law Enforcement at the 12th World Summit on Counter Terrorism, ICT – Herzliya, Israel, September 10-13.



**James Martin** (pictured), visiting professor (Public Management and Policy) and **Harvey K. Newman**, professor (Public Management and Policy), led a bus tours for the Global Financial Dignity Summit, sponsored by Operation Hope. Ambassador Andrew Young and several students from the AYSPS also participated in the program. The bus tours highlighted investment opportunities in neighborhoods near downtown Atlanta.

**Carlianne Patrick**, assistant professor (Economics), was an invited discussant on Stephen Redding's (Princeton) new research "Task Specialization in US Cities 1880-2000" in the *Journal of Regional Science Special Session*.



**Nonprofit Studies Program** faculty, doctoral students and recent doctoral graduates were prominently represented at the 2012 annual ARNOVA research conference in Indianapolis on November 15-17, 2012. **Dennis Young**, professor (Public Management and Policy) and director (Nonprofit Studies Program), **Jesse Lecy** (pictured), assistant professor (Public Management and Policy), and **Janelle Kerlin**, assistant professor (Public Management and Policy), presented papers, chaired panels and served as discussants. Doctoral students from the department of Public Management and Policy; **Hyung Hoon Kim**, **Na Sai**, **Elizabeth Searing**, **Yuriy Davydenko** and **Choony Kim** delivered research papers. Alumni **Grace Chikoto** (Ph.D. in Public Policy '09), **Jasmine McGinnis** (Ph.D. in Public Policy '12), **Nick Harvey** (Ph.D. in Public Policy '11) and **Lewis Faulk** (Ph.D. in Public Policy '11), also presented papers.

The Andrew Young School's **Office of Career Services and Student Life** hosted RESUMIX from November 5-9, 2012. During this event, seasoned professionals provided informational interviews and resume critiques to 140 AYS juniors, seniors, and graduate students. Thirty-seven employers from across the region were represented at the event, many of whom were AYSPS alumni.

## New Staff



**Astrid Prudent** joined the Center of Excellence (COE) team at the Georgia Health Policy Center in August 2012. Astrid is the COE Master Trainer/Coach for High Fidelity Wraparound implementation. Her role is to coordinate all of the COE's activities related to high fidelity wraparound, as well as provide coaching and training in Georgia. She is also assisting the COE in developing either a training or certification process to insure implementation fidelity of wraparound for providers in Georgia. Astrid comes to the COE with experience as both a Wraparound Supervisor and Care Coordinator. She has a Master of Community Counseling from Argosy University in Atlanta and a Bachelor of Arts in Psychology from the University of Central Florida.

The *Dean's E-News* is a feature published by the AYSPS Dean's Office. For publication in the next issue, please submit your news items by Thursday at 5:15 p.m. to **Gayon McFarquhar-Johnson** at [gayon@gsu.edu](mailto:gayon@gsu.edu)