

Message from the Dean



As some of you have already heard, 2016 marks the 20th anniversary for the Andrew Young School of Policy Studies.

From the start, the AYSPS has had an outstanding research profile. An *Annual Report* from 1997 lists our faculty articles in *Public Administration Review*, the *American Economic Review*, and tons more. External grants and contracts from USAID, the Department of Defense, and the Georgia Department of Human Resources are listed. Our student numbers were somewhat small though with about 600 students and as the report states, for example, that a total 63 students participated in internships over the previous year.

As the years have moved on, we have progressed and can boast some wonderful things. Last academic year, 2014-2015, we had 2,208 students enrolled with 664 students in academic internships. We had over \$19 million in external grants and contracts from the National Institutes of Health, the National Science Foundation, the Urban Institute, the World Bank and the Robert Wood Johnson Foundation, among many, many others. Our scholarly articles continue to flow at a rapid rate, and we have added prestigious journals such as *Criminology* and the *Journal of Social Work Education* to our list of outlets.

U.S. News and World Report's 2014 Best Public Affairs Schools ranks the Andrew Young School No. 23 among 266 colleges with graduate programs in public affairs and administration: No. 4 in public finance and budgeting, No. 12 in city management/urban policy, No. 12 in nonprofit management, No. 24 in public policy analysis, and No. 26 in public management administration. The economics program ranks No. 72, and the School of Social Work ranks No. 52, first among all programs that do not confer a doctorate degree.

We will commemorate this important anniversary in a number of ways through the year. If you have thoughts or ideas for this milestone, please let me know. The end event will be a big celebration in late September of 2016 that will include faculty, staff and alumni, as well as our external friends and supporters. We hope that everyone can join in the celebration!

Awards and Grants



Congratulations to **Josh Hinkle**, assistant professor (Criminal Justice & Criminology), on receiving the 2015 Springer Outstanding AJCJ (American Journal of Criminal Justice) Article Award for Emotional Fear of Crime vs. Perceived Safety and Risk: Implications for Measuring “Fear” and Testing the Broken Windows Thesis. Hinkle will receive the award during the 2015 Southern Criminal Justice Association Conference in Charleston, S.C., September 9-12, 2015.

Publications



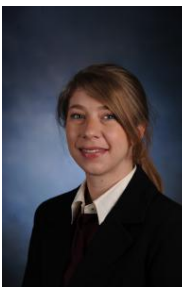
David L Sjoquist, professor (Economics), & **John V. Winters**, alumna. (Ph.D. Economics, '09 and currently at Oklahoma State University). (2015). The Effect of Georgia's HOPE Scholarship on College Major: a Focus on STEM. *IZA Journal of Labor Economics*, 4:15. <http://goo.gl/gAnuij>



Jim Cox, Noah Langdale Jr. Chair in Economics, director, Experimental Economics Center, and professor (Economics), & W. H. Orman (University of Alabama-Huntsville). (2015). Trust and Trustworthiness of Immigrants and Native-Born Americans. *Journal of Behavioral and Experimental Economics*, 57, 1-8. <http://goo.gl/1z2qiB>



Timothy Brezina, professor (Criminal Justice and Criminology), & R. Agnew (Emory University). (2015). Juvenile Delinquency. In E. Goode (Ed.), *The Handbook of Deviance*, John Wiley & Sons, Inc., Hoboken, NJ. doi: 10.1002/9781118701386.ch18. <http://goo.gl/BxetbP>



Carlianne Patrick, assistant professor (Economics), has the following publications:

- (2015). “Willing to Pay: Charter Schools’ Impact on Property Values.” Fiscal Research Center. <http://goo.gl/nwPu1W>
- (2015). “Assessing Georgia’s Non-Tax Economic Development Incentives.” Center for State and Local Finance. <http://goo.gl/y8S1fW>



Jim Marton, associate professor (Economics), A. Yelowitz, M. Shores, & J. Talbert (University of Kentucky). (2015). Does Medicaid Managed Care Help Equalize Racial and Ethnic Disparities in Utilization. *Health Services Research*, forthcoming.



Christine Roch, associate professor (Public Management and Policy), & **Jason Edwards**, Ph.D. (Public Management and Policy, '15). (2015). Representative Bureaucracy and School Discipline: The Influence of Schools' Racial Contexts. *American Review of Public Administration*, forthcoming.

Presentations



Sally Wallace, associate dean, and professor (Economics), presented "Culture, Compliance and Confidentiality: A Study of Taxpayer Behavior in the U.S. and Italy," at the International Society for Economic Measurement Conference held in Paris, France, July 22-24, 2015.



Debra Kibbe, senior research associate (Georgia Health Policy Center), presented "Health Behavior Change and Motivational Interviewing: Patient-Centered Techniques" at the Georgia Chapter of the American Academy of Pediatrics' workshop to improve quality care in patients with asthma in Atlanta on August 8, 2015.



Jimmy Dills, research associate II (Georgia Health Policy Center); Florence Fulk, Tami Thomas-Burton, David Egetter (all from the Environmental Protection Agency); and Yvonne Jones (Atlanta's Neighborhood Planning Unit L), co-facilitated a workshop, "Health Impact Assessment: Engaging Communities in Local Decisions," at the U.S. Environmental Protection Agency's Community Involvement Training Conference in Atlanta on August 5, 2015.

Community Outreach and Events

The **Georgia Health Policy Center** is the national coordinating center for the Robert Wood Johnson Foundation's initiative, [Bridging for Health: Improving Community Health through Innovations in Financing](#).

Georgia International Law Enforcement Exchange (GILEE) delegates Keith Glass, director of public safety for Monroe, Ga., and John King, chief of police for Doraville, Ga., were highlighted in the Patch.com article, "[Gov. Deal Appoints Sandy Springs Residents to Boards](#)," August 17, 2015.

Robbie Friedmann, Professor Emeritus (Criminal Justice & Criminology) and executive director (Georgia International Law Enforcement Exchange), served as judge of the International Association of Chiefs of Police (IACP) Community Policing Awards for 2015 in Oak Bluffs Mass., in early August.

Media



Robbie Friedmann, Professor Emeritus (Criminal Justice & Criminology) and executive director (Georgia International Law Enforcement Exchange) and the GILEE program were featured on the following:

- WSB-TV's story, "[Police Leaders from Israel Go through Exchange Program with APD](#)," August 19, 2015.
- Atlanta Police Foundation's [Facebook](#) page, August 19, 2015.

The **Fiscal Research Center's** charter school report received several media hits:

- WABE, "[Atlantans Pay More for Homes to get Charter School Access](#)," August 20, 2015
- Atlanta Journal Constitution, "[Jury out on charter school performance, but buyers vote with wallets](#)," Aug. 19, 2015.
- AJC's "Get Schooled" blog, "[Study: Metro Atlanta home buyers willing to pay more to live in charter school attendance zone](#)," Aug. 18, 2015.

The Jackson-Progress Argus featured data from a tax report by the **Fiscal Research Center** in a back-to-school feature, "[Georgia retailers expect boost from sales tax holiday](#)," July 10, 2015.

The Tax Policy Center published a write-up on the **Center for State and Local Finance's** state-level dynamic scoring research in "[Daily Deduction](#)" on July 9, 2015. The Tax Policy Center is a joint effort of the Urban Institute and the Brookings Institution.

Moving on Up...Congratulations to Wallace and Arp on their New Positions

Congratulations to Professor **Sally Wallace** in her new role as Associate Dean for Research and Strategic Initiatives, and **Mathieu Arp**, the new director of the Office of Academic Assistance.



As former chair of the Department of Economics, **Wallace** brings a wealth of experience to her new position. Under her leadership, the department hired top 2CI faculty, created additional international initiatives and expanded its research capacity. Wallace will retain her position as director of the Fiscal Research Center and will continue to serve as chair of the economics department until her replacement is found.



Arp, who recently served as the assistant director for Graduate Admissions and Program Administration, has 12 years of advising and admissions experience at Georgia State University. A staffer with the AYSPS since 2006, Arp has led the college in its efforts to move the graduate admissions and review process online, streamlined the auditing process for approving students for graduation and has created recruitment strategies to increase graduate admissions.

A Big AYSPS Welcome to New Staff Members!

The Andrew Young School extends a warm welcome to several new staff members.



Brian Mitchell is the new assistant director for Employer Relations in the Career Services and Student Life Office. Mitchell comes to the AYSPS from North Carolina Central University (NCCU), where he worked as a career counselor and closely supported employer engagement efforts. A nationally certified counselor with over 10 years of career and workforce development experience, Mitchell has been recognized for his expertise in the career and educational development of young adults.

Over the past few months, the **Georgia Health Policy Center (GHPC)** has had several new staff members come on board. They are:



Ursula Davis, senior research associate, joined the GHPC's Center of Excellence for Children's Behavioral Health. She brings with her experience in child welfare, mental health, program management, training and strategic planning.



Chandrika Derricho, research associate I, brings expertise in in the areas of policy research and program evaluation including data collection and analysis, fidelity evaluation and process monitoring. She will be focusing on research and evaluation of projects related to long-term services and supports.



Lisa Gable, associate to the director, brings 20 years of experience in the medical field working with nonprofit organizations, private practices and grant funded projects.



Kati Keebaugh, research associate II, is on the GHPC's Community Health Systems Development team. She provides technical assistance to health initiatives across the country with a focus on building capacity, strategic thinking and planning for long-term sustainability.



Lannda Oden, business manager, works in business operations. She currently manages the financial affairs of the Patient Centered Outcomes Research Institute and the Robert Wood Johnson Foundation sponsored projects.



Jana Pruett, research associate II, is working on the Center of Excellence for Children's Behavioral Health team. She brings with her experience as both a researcher and as a clinical social worker.



Colleen Smith, research associate II, works with GHPC's Center of Excellence for Children's Behavioral Health. She provides support to research and evaluation for programing and policy excellence. She has experience designing programs, developing and managing monitoring systems, conducting evaluations, providing technical assistance to implementation teams, and performing research.

GILEE Scholarship Stipends Available

GILEE plans to offer the following **research stipends** for spring and/or summer semesters 2016:

- Two Master's Students GRA Level 2 @ \$1,500 for one semester = \$3,000
- One Doctoral Student GRA Level 3 @ \$3,000 for two semesters = \$6,000
- One faculty research stipend as seed funding @ \$2,000 = \$2,000

All stipends are open to students and faculty from all Andrew Young School and Georgia State University departments and units with an emphasis on interdisciplinary teamwork. A competitive process, stipend awards will be evaluated based on relevance to GILEE's work and value to the law enforcement community.

Submission requirements include:

- Graduate students: good academic standing with GPA of 3.5 and above.
- Faculty: Full time tenured or tenure track.
- Submit a brief proposal that will have title, abstract, and methodology.
- A brief resume.
- Deadline: September 30, 2015.
- Submit to: gilee@gsu.edu

The *Dean's E-News* is a feature published by the AYSPS Dean's Office. For publication in the next issue, please submit your news items to Marcia Jones Cross at mcross7@gsu.edu.