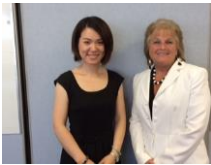


Awards & Honors

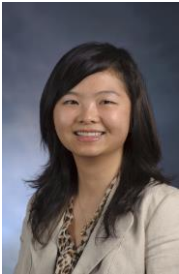


Nancy Kropf, associate dean for Research & Strategic Initiatives, was elected to the Rosalyn Carter Institute for Caregiving National Advisory Board. Founded by former First Lady Rosalyn Carter, the Institute promotes support for both formal and informal caregivers around the globe.



Min Su, Ph.D. candidate (Public Management and Policy), was awarded a \$1,000 graduate scholarship from the Georgia Fiscal Management Council. The competitive scholarship is awarded annually to only one graduate student. Min is shown here with Donna Stapleton, chair of the scholarship committee.

Publications



Cathy Yang Liu (pictured), associate professor (Public Management and Policy) and **Xi Huang**, Ph.D. candidate (Public Management and Policy). Understanding Different Types of Urban Entrepreneurs in China: Capital Endowments and Entry Dynamics. *Growth and Change*, forthcoming.



David Sjoquist (pictured), professor (Economics) and the Dan E. Sweat Distinguished Chair in Educational and Community Policy and **Ki-Whan Choi** (Ph.D., Economics '06 and now with the Massachusetts Department of Revenue). Effects of Land Value Taxation in an Urban Area: An Urban CGE Approach. *Land Economics*, forthcoming.



Bill Waugh, Professor Emeritus (Public Management and Policy). Waiting for the Boogie Man: Ebola, Flu, and Other Reasons for Community Resilience. *PA Times Online*, October 7, 2014. <http://goo.gl/AHki1b>



Bruce Kaufman, professor (Economics). Theorizing Determinants of Employee Voice: A Multi-Disciplinary and Multi-Level Model. *Human Resource Management Journal*, forthcoming.



Julie Hotchkiss, adjunct professor (Economics) and senior policy advisor (Federal Reserve Bank of Atlanta). Adjusted EPOP as an Indicator of Labor Market Strength. *Research in Applied Economics*, forthcoming.

Presentations



Karen Minyard (pictured), executive director (Georgia Health Policy Center), and **Debra Kibbe**, senior research associate (Georgia Health Policy Center), presented at the SHAPE Partners Mega Meeting on September 17, 2014. Debra presented on the physical activity panel, while both Karen and Debra presented on the data and evaluation panel. The Georgia SHAPE statewide childhood obesity prevention initiative is led by the Georgia Department of Public Health.

Karen Minyard presented “Georgia’s Health Care Safety Net” at the Healthcare Georgia Foundation’s Board of Directors Meeting in Adairsville, Ga., on September 18, 2014.



Debra Kibbe, senior research associate (Georgia Health Policy Center), presented “Prevention of Pediatric Overweight and Obesity: Population and Individual Approaches” at the Commission on Dietetic Registration Certificate of Training in Childhood and Adolescent Weight Management Course in Newport Beach, Calif., September 4-6, 2014.



Glenn Landers, associate project director (Georgia Health Policy Center), presented "Leading through Health System Change" at the California Conference of Local Health Officers Semiannual meeting "The Promise of the Affordable Care Act" in Sacramento, Calif., on October 2, 2014.



Astrid Prudent, research associate II (Georgia Health Policy Center), has been invited to participate in the National Council for Behavioral Health's *Addressing Health Disparities Leadership Program* for 2014-2015. The program mentors culturally diverse mid-level managers into executive positions, nurturing leaders who can represent and serve the nation's diverse communities.

PMAP Faculty and Graduate Students Present at the Southeastern Conference of Public Administration (SECoPA)

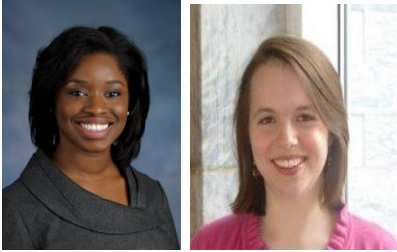
Public Management and Policy (PMAP) faculty and doctoral candidates had a strong presence as workshop moderators and presenters during the 2014 meeting of the Southeastern Conference of Public Administration (SECoPA), September 17-20, 2014, in Atlanta. Following are the participants and their presentations:



Gregory Lewis, chair and professor, presented "Deciding to Retire from the Federal Service" on the Human Capital Management, Retirement, & Whistle-blowing in the Public Sector panel.



Kelechi Uzochukwu, Ph.D. candidate, presented "Comparing the Effectiveness of Formal and Informal Coproduction in Engaging Underrepresented Groups in Public Service Delivery: The Case of Atlanta, GA" for the Looking for New Tools in Governance panel and "Engaging Traditionally Underrepresented Groups in Public Service Delivery: Evidence from 20 Countries in Sub-Saharan Countries in Sub-Saharan Africa" for the International Perspectives on Social Problems & Governance panel.



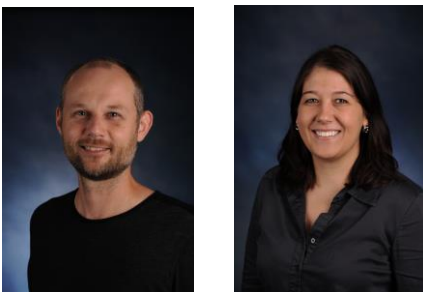
K. Juree Capers (left), assistant professor, and **Cassandra Webster**, M.P.A. candidate, presented “Organizational Structure and College Graduation Rates: Exploring the Latino-Anglo Graduation Rate Gap” on the Analyzing Social Policies: Homeless, Graduation Gap, HOPE, & Education Attainment panel.



Katherine Willoughby (left), professor, and **Sarah Beth Gehl**, Ph.D. candidate, presented “State Spending Discretion in a Slow Growth Economy” on the Public Finance Issues in State and Local Government panel.



Gregory Lewis, Rahul Pathak (pictured), Ph.D. candidate, and Chester S. Galloway (Strayer University) presented “Trends in Public-Private Pay Comparability: State and Local Governments” for the Addressing Contemporary HRM Issues: Pay, Employment, & Motivation panel.



Ph.D. candidates **Chris Wyczalkowski** (left) and **Sandy Zook** presented “Principal-Agent Problems in Non-Entitlement Community Development Block Grants” for the Fiscal Sustainability, Infrastructure Quality, and Community Development panel.



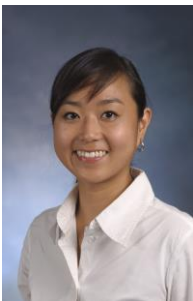
Cathy Yang Liu, associate professor, and **Xi Huang** (pictured), Ph.D. candidate, presented “Welcoming Cities and Communities: Immigration Policy at the Local Government Level” for the Federalism and Immigration Policy: Conflict or Cooperation panel. Liu also chaired the Addressing Contemporary HRM Issues: Pay, Employment, & Motivation panel.



Theodore Poister, (left), professor, **Obed Q. Pasha**, (Ph.D. Public Policy ‘14 and now at the UMass-Amherst) and Lauren Hamilton Edwards (Sam Houston State University) presented “The Impact of Strategic Stance and Formulation on Performance in Public Local Transit Agencies” for the Responsibility & Leadership in Public Organizations panel.



Michael Henderson, Ph.D. candidate, presented “Impacts of the New Markets Tax Credit and Low Income Housing Tax Credit Programs in Low-Income Urban Communities” for the Public Expenditures and Network Arrangements panel.



Ph.D. candidates **Sandy Zook** and **Jung-In Soh** (pictured) presented “Revenue Diversification Among Nonprofits with Uniform Government Finance and Regulation” for the Financial Diversification, Equity, and Citizen Choice panel.



Min Su, Ph.D. candidate, presented “Exploring the Impact of Operating Reserves on Nonprofit Organizations’ Vulnerability” for the Nonprofit Fundraising & Fiscal Accountability panel.



Greg Streib, professor, presented “Results that Matter: Reconsidering the Role of Professional Local Government Managers” for the Exploring Issues in State and Local Government Administrations panel.



W. Bartley Hildreth (left), professor, and **Carolyn Bordeaux**, associate professor, director (Center for State and Local Finance), and associate director (Fiscal Research Program), presented “State Budget Execution: Institutional Arrangements for Managing Mid-Year Budget Adjustments,” for the Political Economy of Public Budgeting panel. Bordeaux also served as panel moderator.

Bill Waugh, Professor Emeritus, moderated the Lessons from International Disaster Operations and the Regional and Community Emergency Management panels. Waugh also served on the SECoPA program committee.



Keegan William Smith, M.P.A candidate, and Robert William Smith (Savannah State University), presented “Electronic Citizen Participation in Local Government Decision-making: Applications for Budgeting, Planning and Management” on the Public Finance Issues in State and Local Government panel.

Student News



Komla Dzigbede, Ph.D. candidate (Public Management and Policy). (2014). What Brings China to Africa? An Analysis of Market Size, Natural Resource Availability, and Macroeconomic Risk. *Journal of African Development*, Vol. 16(2), forthcoming.

Alumni News



Congratulations to AYSPS alumni **Tayo Adeyefa** (left) (B.S. Public Policy '12) and **Kristyn Back** (M.P.A. '14), who have been named to receive the [2014 Nonprofit Leader 30 Under 30 award](#) from the Young Nonprofit Professionals Network of Atlanta. Adeyefa is a development coordinator for the National Kidney Foundation in Atlanta, and Back is the development associate for Park Pride in Atlanta. They will be recognized for their accomplishments on October 23, 2014 at the [YNPN NextGen Breakfast in Atlanta](#).

The *Dean's E-News* is a feature published by the AYSPS Dean's Office. For publication in the next issue, please submit your news items by Thursday at 5:15 p.m. to Marcia Jones Cross at mcross7@gsu.edu.